

**REASONS AND SUPPORTING DATA  
FOR THE  
CLOSURE OF  
GEORGE C. WEIMER ELEMENTARY SCHOOL  
INTO  
ALBAN ELEMENTARY SCHOOL  
AND  
BRIDGEVIEW ELEMENTARY SCHOOL**



George C. Weimer Elementary School



Alban Elementary School



Bridgeview Elementary School

**REASONS AND SUPPORTING DATA**  
**FOR THE**  
**CLOSURE OF**  
**GEORGE C. WEIMER ELEMENTARY SCHOOL**  
**INTO**  
**ALBAN ELEMENTARY SCHOOL AND**  
**BRIDGEVIEW ELEMENTARY SCHOOL**

**KANAWHA COUNTY BOARD OF EDUCATION**

**Prepared Pursuant to**

**W. Va. Codes §18-5-13 and §18-5-13a and**  
**WVBE Policies 6200 and 6204.**

**Kanawha County Schools**  
**Under the direction and authority of**  
**The West Virginia Board of Education (WVBE)**

**Public Hearing May 4, 2023**  
**County Board Approval May 4, 2023**

---

This template (revised 3/16/22) is provided by the WVDE as a technical assistance tool for county boards to use in the preparation of their supporting documents for a proposed school closure or consolidation. This template does not reduce or eliminate the requirements found in WV State Code or WVBE Policy 6204 as they relate to school closures or consolidations. This document does not replace or supplant legal assistance provided by counsel engaged to represent the county.

## Table of Contents

3.0. County Procedures .....	2
3.2. Executive Summary .....	3
3.2.a Enrollment .....	5
3.2.b. Facilities .....	8
3.2.c. Finance .....	14
3.2.d. Personnel .....	17
3.2.e. Transportation .....	19
3.2.f. Educational Program .....	22
3.3. & 3.4. Public Notices and Hearings .....	23
3.6. County Board Actions .....	26
3.6.a. Superintendent Verification of Board Actions .....	27
Appendix of Supporting Data .....	28

### 3.0. County Procedures

*WVDE Application for school closure and/or consolidation*

Kanawha County

Closure of George C. Weimer Elementary School into Alban Elementary School and Bridgeview Elementary School

Scheduled Date of Hearing: Thursday, May 4, 2023 at 6:00 P.M.

Scheduled Date of County Board Vote: Thursday, May 4, 2023 following the Hearing

#### County Procedures

*This template shall be used to accumulate and present the data that is requested in Policy 6204 and W. Va. Code 18-5-13a to support the closure or consolidation of a WV public school.*

*The county shall prepare written reasons and supporting data concerning proposed school closings or consolidations to be submitted to the WVBE for approval in accordance with this policy and W. Va. Code §18-5-13a. The written materials shall:*

- ☐ *be available for public inspection in the office of the county superintendent during the 30 days preceding the date of the public hearing; and*

*Be delivered in duplicate to the:*

- ☐ *principal of a school that is proposed to be closed or consolidated, and of any school which the county designates to receive the students who are relocated as a result of the closure or consolidation; and*
- ☐ *chair of the local school improvement council (LSIC) representing a school that is proposed to be closed or consolidated, and any school that the county designates to receive the students who are relocated as a result of the closure or consolidation.*
- ☐ *A copy of the notice shall be posted at all schools, bus garages, and maintenance areas in the county in conspicuous working areas, for all professional and service personnel to observe.*

Thomas E. Williams, Jr., Ed.D.

---

Superintendent

---

Date:



### 3.2. Executive Summary and Impact Statements

#### County Procedures

*An executive summary shall be prepared including the following items that will summarize with page references to the county's documentation, as defined in section 3.1, those items listed and shall be provided to the WVDE School Facilities Services unit.*

The Kanawha County Board of Education has experienced a loss in students over the past ten years. The overall student enrollment has decreased in enrollment by -15.5%. This represents a loss of 4,362 students from 2013/14 – 2022/23. In an effort to provide an equal and quality education to each student in Kanawha County Board the Kanawha County of Education proposes to consolidate services. This would not only save the Board of Education operating expense, but it would allow the county to provide an education curriculum that they currently cannot afford to provide all students.

The Kanawha County Board of Education proposes to merge George C. Weimer Elementary School to the existing Alban Elementary School and Bridgeview Elementary School, thus closing George C. Weimer Elementary School. The Merge would provide the following:

- The desire to meet the Economy of Scale guidelines of the SBA and the State Department of Education.
- Improving school transportation efficiency and complying with guidelines for length of bus rides for students to all facilities.
- Housing all students in permanently constructed facilities.
- Increasing the efficiency of operations of all facilities.

#### **Enrollment 3.2.a.**

Kanawha County has had a 14,944 decrease in population from 2010 through 2019. The student enrollment at George C. Weimer Elementary School has decreased by 34 students over the past ten years, and is projected to decrease by another 9 students over the next ten years. Alban Elementary School has decreased by 121 students over the past ten years, and is projected to decrease by another 38 students over the next ten years. Bridgeview Elementary School has decreased by 64 students over the past ten years, and is projected to decrease by another 40 students over the next ten years. The merger of George C. Weimer into these two schools would benefit all three student populations by decreasing the operating expenses and providing a better learning atmosphere and curriculum for students.

#### **Facilities 3.2.b.**

George C. Weimer Elementary School is 2.5 miles from Alban Elementary School, and 3.5 miles from Bridgeview Elementary School. George C. Elementary School is in average condition, but it is not ADA compliant. George C. Weimer has a 44.8% building utilization rate. Alban Elementary School is in average condition, with a 56.3% building utilization rate. Bridgeview Elementary School is in average condition, with a 67.0% building utilization rate. The existing facilities have been reviewed and evaluated during the recent CEF process. The SBA form 134 Worksheets are shown in the Appendix of Supporting Data. The space Utilization is also listed for each facility.

## **3.2. Executive Summary and Impact Statements**

### **County Procedures**

#### **Finance 3.2.c.**

In an effort to provide an equal and quality education to each student in Kanawha County the board proposes to consolidate services. This closure and consolidation would save the Board of Education \$387,279.00 annually. Savings on maintenance and operating expenses on aging buildings that they currently do not have the finances to properly maintain.

#### **Personnel 3.2.d.**

The County Board of Education has attempted to reduce staff due to a loss in enrollment over the past ten years to meet the formula for professional and service personnel. This closure and consolidation would result in a reduction of 8 Professional Personnel and 6 Service Personnel. Kanawha County will continue to follow the WVDE recommended guidelines on the number of employees but maintain the number of staff required to deliver the education programs made available to its students. Some Staff may be reduced due to the duplication of positions after merger.

#### **Transportation 3.2.e.**

There are no negative variances with any of the bus routes from the Green Valley of Saint Albans, Jefferson, or Spring Hill of South Charleston areas. The routes will not exceed the thirty minute guideline as outlined in the WVDE Policy 6200, et al. Detailed information is found on page twenty one of this document.

#### **Educational Program 3.2.f.**

Kanawha County Schools ensures an engaging educational environment for learners (students and adults) focusing on teaching and learning in the 21<sup>st</sup> century. Our mission statement is “to provide a world-class education that ensures success for every student in the 21<sup>st</sup> century. We Believe: All student CAN achieve. Quality teaching is the key to student success.”

Expectations of parents have evolved through the years, as society has changed. Safe environment, cleanliness, fiscal responsibility, and healthy lifestyles are important issues that are conducive to learning. Parents expect their students to obtain a quality education and to be able to function successfully in life.

### 3.2.a Enrollment

#### County Procedures

#### Enrollment and Population Table

*Trends in student population growth or decline in the county for the previous 10 years.*

Year	2013-2014	2014-2015	2015-2016	2016-2017	2017-2018	2018-2019	2019-2020	2020-2021	2021-2022	2022-2023
Total	28,076	27,604	27,339	26,335	26,230	25,757	25,387	24,799	24,164	23,714

Enrollment Table 1

*Trends in student population growth or decline in the attendance area of the school targeted for closure or consolidation for the previous 10 years.*

#### George C. Weimer Elementary School

Year	2013-2014	2014-2015	2015-2016	2016-2017	2017-2018	2018-2019	2019-2020	2020-2021	2021-2022	2022-2023
Total	172	188	174	176	174	180	142	136	138	138

Enrollment Table 2

#### Alban Elementary School

Year	2013-2014	2014-2015	2015-2016	2016-2017	2017-2018	2018-2019	2019-2020	2020-2021	2021-2022	2022-2023
Total	376	370	355	352	328	311	305	285	251	255

Enrollment Table 3

#### Bridgeview Elementary School

Year	2013-2014	2014-2015	2015-2016	2016-2017	2017-2018	2018-2019	2019-2020	2020-2021	2021-2022	2022-2023
Total	486	475	467	474	474	447	427	412	400	422

Enrollment Table 4

*Population characteristics, such as birth and death rates and age composition of population for the previous ten years, as provided by the most recent Census data for the county.*

#### County Birth and Death Rates

Year	2010	2011	2012	2013	2014	2015	2016	2017	2018	2019
Birth Rate	N/A	11.2	11.6	11.7	11.4	10.9	10.5	10.5	10.3	9.8
Death Rate	N/A	12.4	12.5	13.0	12.8	13.4	13.5	14.2	14.8	14.1

Sources for data :West Virginia Department of Health & Human Resources Bureau for Public Health Health Statistics Center

Enrollment Table 5

### 3.2.a Enrollment

#### County Procedures

#### County Population Data

Year	Total Population	1 to 9	10 to 19	20 to 29	30 to 39	40 to 49	50 to 59	60 to 69	70 to 79	80 and Over
2010	193,068	12.1%	10.9%	11.6%	12.2%	13.6%	15.8%	11.3%	8.3%	4.2%
2011	192,315	11.3%	11.2%	11.7%	12.9%	12.5%	17.0%	11.5%	7.0%	4.7%
2012	192,179	11.0%	11.7%	11.7%	12.4%	12.9%	15.9%	12.7%	7.2%	4.4%
2013	191,275	10.9%	11.6%	12.0%	12.9%	12.0%	15.9%	13.3%	6.2%	5.2%
2014	190,223	11.6%	10.7%	12.1%	12.1%	12.8%	15.8%	12.6%	8.0%	4.4%
2015	188,332	11.0%	11.2%	11.4%	12.4%	12.7%	14.0%	15.2%	7.4%	4.5%
2016	186,241	11.8%	10.2%	12.0%	11.7%	12.9%	15.3%	13.9%	8.5%	4.0%
2017	183,293	11.8%	10.9%	11.4%	11.8%	12.4%	13.0%	15.4%	8.2%	5.0%
2018	180,454	11.2%	10.4%	11.9%	11.7%	12.3%	14.3%	15.2%	8.2%	4.9%
2019	178,124	10.3%	11.3%	11.9%	11.9%	12.3%	13.5%	13.7%	9.8%	5.2%

Sources for data :West Virginia Department of Health & Human Resources Bureau for Public Health Health Statistics Center & United States Census Bureau

Enrollment Table 6

*Projections of enrollment, by grade and school, in the affected attendance area, for the next ten years.*

#### George C. Weimer Elementary School

Year	2023-2024	2024-2025	2025-2026	2026-2027	2027-2028	2028-2029	2029-2030	2030-2031	2031-2032	2032-2033
Pre-K	16	15	13	10	19	21	28	18	18	15
K	27	16	15	13	10	19	21	28	18	18
1st	18	27	16	15	13	10	19	21	28	18
2nd	18	18	27	16	15	13	10	19	21	28
3rd	14	18	18	27	16	15	13	10	19	21
4th	18	14	18	18	27	16	15	13	10	19
5th	22	18	14	18	18	27	16	15	13	10
Total	133	126	121	117	118	121	122	124	127	129

Sources for data :West Virginia Department of Education ZOOMWV

Enrollment Table 7

### 3.2.a Enrollment

#### County Procedures

##### Alban Elementary School

Year	2023-2024	2024-2025	2025-2026	2026-2027	2027-2028	2028-2029	2029-2030	2030-2031	2031-2032	2032-2033
Pre-K	4	29	26	29	32	45	38	8	34	31
K	37	4	29	26	29	32	45	38	8	34
1st	39	37	4	29	26	29	32	45	38	8
2nd	36	39	37	4	29	26	29	32	45	38
3rd	37	36	39	37	4	29	26	29	32	45
4th	24	37	36	39	37	4	29	26	29	32
5th	48	24	37	36	39	37	4	29	26	29
Total	225	206	208	200	196	202	203	207	212	217

Sources for data : West Virginia Department of Education ZOOMWV

Enrollment Table 8

##### Bridgeview Elementary School

Year	2023-2024	2024-2025	2025-2026	2026-2027	2027-2028	2028-2029	2029-2030	2030-2031	2031-2032	2032-2033
Pre-K	40	49	46	49	55	68	55	46	57	52
K	52	40	49	46	49	55	68	55	46	57
1st	56	52	40	49	46	49	55	68	55	46
2nd	57	56	52	40	49	46	49	55	68	55
3rd	56	57	56	52	40	49	46	49	55	68
4th	65	56	57	56	52	40	49	46	49	55
5th	69	65	56	57	56	52	40	49	46	49
Total	395	375	356	349	347	359	362	368	376	382

Sources for data : West Virginia Department of Education ZOOMWV

Enrollment Table 9

#### Projection Method

*Explanation of the projection method utilized addressing the relationship between the most recent Second Month Report, the Second Month Reports for the previous three years, and the most recent census data for the county.*

Kanawha County Schools uses the Cohort Survival Ratio Technique for enrollment projection. The source of the enrollment data for all schools is taken from the second month report that is submitted to the West Virginia Department of Education. Enrollment data is kept in the reporting for the past ten years and it assists on making future projections. Resident live births and computation of survival ratios are factors that are also considered for enrollment projection.



### 3.2.b. Facilities

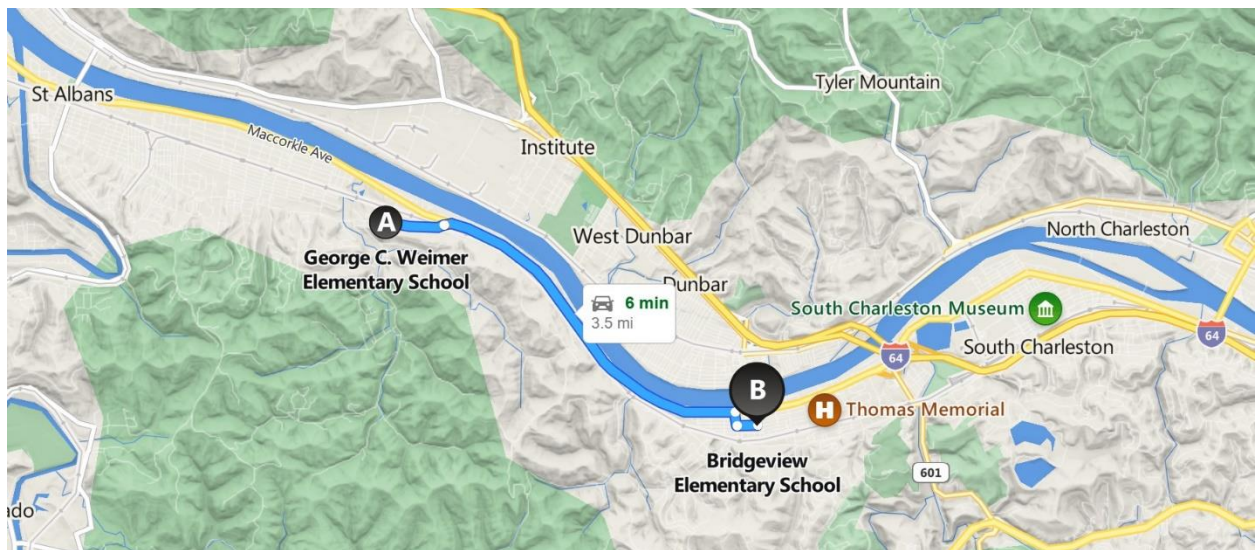
#### County Procedures

#### Descriptive Maps

Maps showing the school(s) targeted for closure or consolidation and the school(s) that the county designates to receive the students with mileage indicated between and among schools affected. The map shall include a legend indicating the grade configuration, student enrollment, and utilization percentage for each school on the map.



Map 1



Map 2

### 3.2.b. Facilities

#### County Procedures

School	Grade Config.	Current or Anticipated Enrollment	Utilization	Distance to School A	Distance to School B	Distance to School C
George C. Weimer Elementary School (Closing School)	PK-5	138	44.8%	-	2.5 Miles	3.5 Miles
Alban Elementary School (Receiving School)	PK-5	255	56.3%	2.5 Miles	-	-
Bridgeview Elementary School (Receiving School)	PK-5	422	67.0%	3.5 Miles	-	-

Facilities Table 1

### 3.2.b. Facilities

#### County Procedures

#### Written Facility Condition Description

*Written description of the physical condition of the school targeted for closure or consolidation and the school or schools which the county designates to receive the students. This description shall include age, number of buildings, general condition, adequacy of structural, electrical, and mechanical systems to provide a safe and healthful environment.*

George C. Weimer Elementary School is a 22,221 square foot non sprinkled multi-level masonry building. The original 9,288 square foot section was constructed in 1951. This section of the building contains six of the thirteen classrooms, restrooms, Library, Computer Lab, Counselor's Office, and mechanical room. In 1961 George C. Weimer Elementary School received a 8,602 square foot seven classroom, office suite, and mechanical room addition. In 1969 a 4,331 square foot addition was added. This addition would contain a kitchen, multipurpose room, and custodial office. George C. Weimer currently uses one portable for offices.

The 1951 section of George C. Weimer needs to be made ADA accessible. A new secured entry is needed and office is needed in the front of the building. The current Main Entry is located in the rear of the school, and is not visible from the parking lot or the front of the school. Aesthetically there are many repairs needed. Major window, roof, HVAC, and electrical renovations are needed. The wooden soffits and fascia need to be replaced. The hot water boiler and electrical panels in the mechanical room located in the 1951 section of the building has been on fire in the past. A separate hot water boiler serves the 1961 section. Window units are used for cooling in the majority of the building. The 1969 section of the building utilizes roof top units for heating and cooling.

Alban Elementary School is a 28,753 square foot sprinkled single story masonry building. The original 9,147 square foot section was constructed in 1962. This section of the building contains six of the nineteen classrooms, half of the multipurpose room, kitchen, speech, and counselor's office. In 1969 Alban Elementary School received a 4,217 square foot three classroom and office suite addition. In 2001 a 15,389 square foot addition was added. This addition would contain a ten classrooms, library, computer lab, multipurpose expansion, and kitchen expansion. Alban Elementary currently uses one portable.

Alban Elementary School needs a secured entry. An addition would allow for the removal of the portable. Aesthetic repairs are needed, but overall the school is clean and in good condition. Window, HVAC, and electrical renovations are needed. Approximately 65% of the EPDM roof is at the end of its expected life span. Hot water boilers, and window units are utilized for the HVAC system through out the majority of the building. Roof Top Units are utilized for HVAC in the 2001 additions. Split systems are used for the HVAC system in the cafeteria and gymnasium.

Bridgeview Elementary School is a non-sprinkled 66,845 square foot two story masonry building. The original 52,916 square foot section was constructed in 1953. This section of the building contains the office suite, gymnasium, stage, cafeteria, library, the bulk of the thirty classrooms, and mechanical room in the basement. In 1962 Bridgeview Elementary School received a 11,539 square foot seven classroom, office, and restroom addition. In 1969 a 2,570 square foot addition was added. This addition would contain one classroom, office, and a photography classroom.



### 3.2.b. Facilities

#### County Procedures

A secured entry is needed at Bridgeview Elementary School. Aesthetically, repairs are needed, but overall the school is clean and in good condition. Masonry repairs and possible structural repairs are needed in the gymnasium and some of the upstairs classrooms. A window replacement project replaced most of the original windows, however there are still a few original windows that need replaced. Bridgeview Elementary is scheduled for an HVAC and roof replacement with funds from the approved Kanawha County Schools 2024 School Levy. Triad boilers and window units are utilized through out the majority of the building.

#### Educational Programs and Related Student Services

*Evaluation of the school targeted for closure or consolidation and the school or schools that the county designates to receive the students in regard to the school(s) adaptability to the present and proposed educational programs, and the provisions of related student services.*

Policy 6200 guidelines were used in the planning and implementation of the closure of George C. Weimer Elementary School. The latest Comprehensive Educational Facilities Plan will be used in planning and developing any facility improvements at Alban Elementary School or Bridgeview Elementary School, the receiving schools.

Alban Elementary School and Bridgeview Elementary School have adequate space for special needs students. Space is available for Pre-kindergarten classrooms, Kindergarten classrooms, Emotional Disturbance classroom, and Intellectual Disability classroom. Instruction will be designed to teach the West Virginia Content Standards and Objectives.

Alban Elementary and Bridgeview Elementary students, teachers, and staff use technology on a daily basis. The school serves as a Pre-k through 5<sup>th</sup> with one team per grade level. Student support programs are in place along with the appropriate support staff. Wireless internet access is available throughout the school.

#### School Enrollments, Capacities, and Utilizations

<i>School</i>	<i>Enrollment</i>	<i>Building Capacity</i>	<i>Utilization %</i>
George C. Weimer Elementary School	138	308	44.8%
Alban Elementary School	255	453	56.3%
Alban Elementary School (Consolidated)	269	443	60.7%
Bridgeview Elementary School	422	630	67.0%
Bridgeview Elementary School (Consolidated)	438	630	69.5%

Facilities Table 2

#### Utilization Calculation Sheet

*The supporting School Building Authority of West Virginia's (SBA) Worksheet on Building Program Utilization.*

See Appendix for this Documentation

### **3.2.b. Facilities**

#### **County Procedures**

#### **Required Services and Barrier-free Environments**

*Comparison of the school(s) targeted for closure or consolidation and the school(s) which the county has designated to receive the students in regard to providing the required services and barrier-free environments to students with disabilities.*

The original 1951 section of George C. Weimer Elementary School is not ADA accessible. The 1961 addition and the 1969 addition are ADA accessible depending on which entrance is used. To access either the 1961 addition from the 1969 addition or the 1969 addition from the 1961 addition, a disabled person would have to exit the facility and go around the outside of the building. Three ADA accessible restrooms are located in the 1961 addition near the office.

Alban Elementary School maintains ADA accessibility throughout the entirety of the building. Alban has two single occupant ADA accessible restrooms in the building.

Bridgeview Elementary School maintains ADA accessibility throughout the entirety of the building. Bridgeview Elementary School has several ADA accessible single occupant toilets throughout the building.

#### **Grade Configurations and Educational Programs**

*Elaboration on the effect the proposed school closing or consolidation will have on the school system's future plans regarding grade configuration, educational programs, and facility requirements.*

The closure of George C. Weimer Elementary School would allow for more efficient and increased dispersion of resources to areas of need. It would give the students of Kanawha County Schools access to more appropriate and advantageous educational programs.

#### **Construction Work Required for the Proposed Action**

*Elaboration on the planned facility additions, renovations, or replacements that are required by the county to accommodate the proposed closing and consolidation.*

Additions, renovations, or replacements are not required or proposed to George C. Weimer Elementary for closure.

Additions, renovations, or replacements are not required or proposed to Alban Elementary School to accommodate a portion of the George C. Weimer Elementary School enrollment.

Additions, renovations, or replacements are not required or proposed to Bridgeview Elementary School to accommodate a portion of the George C. Weimer Elementary School enrollment.

#### **The Future of Closed Facilities**

*Elaboration on the future use or disposal of facilities designated by the county for closure.*

George C. Weimer Elementary School will be a permanent closure into Alban Elementary School and Bridgeview Elementary School. George C. Weimer Elementary School will be demolished and the site will be reclaimed.

### **3.2.b. Facilities**

#### County Procedures

#### **School Building Authority of WV (SBA)**

*Identify if the proposed school closing or consolidation is contingent upon receiving funding from the SBA.*

The closure of George C. Weimer School is not contingent upon SBA funding. The current George C. Weimer Elementary school students would be absorbed into Alban Elementary School and Bridgeview Elementary School.

#### **SBA Facility Condition Documentation**

*Attachment of the most recent SBA facility evaluation form for each school affected and an updated form if the most recent SBA facility evaluation form is five years old or older.*

[See Appendix for this Documentation](#)

#### **Supporting Photographs, Floorplans, and other Documentation**

*Provide facility floorplans, photos, and any supporting documentation. Examples of supporting documentation includes reports from architects, engineers, Fire Marshall, and insurance companies.*

[See Appendix for this Documentation](#)

### 3.2.c. Finance

#### County Procedures

#### Itemization of Anticipated Cost and Savings

*Itemization of the anticipated cost or savings the county will experience in all areas as a result of the proposed school closure or consolidation. Such itemization shall be in the form of a table indicating the following:*

#### Closing School(s) Annual Current Cost

*The current annual cost at the school(s) to be closed for:*

##### George C. Weimer Elementary School

Item	Amount
Utilities	\$41,490.72
Personnel	\$1,094,336.88
Maintenance	\$86,072.00
Transportation	\$35,171.79
Other	\$5,654.80
<b>Total</b>	<b>\$1,262,726.19</b>

Finance Table 1

#### Receiving School(s) Annual Current Cost (If Applicable)

*The current annual cost at the school(s) to be receiving for:*

##### Alban Elementary School

Item	Amount
Utilities	\$55,792.10
Personnel	\$1,599,281.38
Maintenance	\$189,984.40
Transportation	\$62,703.81
Other	\$13,084.85
<b>Total</b>	<b>\$1,920,846.54</b>

Finance Table 2

##### Bridgeview Elementary School

Item	Amount
Utilities	\$91,732.19
Personnel	\$2,212,419.18
Maintenance	\$41,993.00
Transportation	\$100,937.85
Other	\$17,261.75
<b>Total</b>	<b>\$2,464,343.97</b> *Figure updated April 11, 2023

Finance Table 3

### 3.2.c. Finance

#### County Procedures

#### Anticipated Annual Cost after Action

*The anticipated annual cost at the school(s) to be receiving for:*

##### Alban Elementary School

Item	Amount
Utilities	\$81,152.10
Personnel	\$2,282,982.38
Maintenance	\$196,870.40
Transportation	\$91,761.81
Other	\$19,032.85
Total	\$2,671,799.54

Finance Table 4

##### Bridgeview Elementary School

Item	Amount
Utilities	\$96,732.19
Personnel	\$2,323,135.81
Maintenance	\$43,714.00
Transportation	\$107,054.85
Other	\$18,202.75
Total	\$2,588,839.60

Finance Table 5

#### Net Cost or Savings

*the net cost or savings of the school(s) to be closed and the school(s) designated by the county to be receiving students for:*

##### George C. Weimer, Alban, and Bridgeview Elementary Schools

Item	Amount
Utilities	\$11,131.00 Savings
Personnel	\$299,920.00 Savings
Maintenance	\$77,465.00 Savings
Transportation	-\$3.00 Cost
Other	-\$1,234.00 Cost
Total	\$387,279.00 Savings

Finance Table 6

### 3.2.c. Finance

#### County Procedures

#### Anticipated Construction Cost to Accommodate Action

*Cost of any renovation or addition resulting from the proposed school closure or consolidation, including all proposed funding sources.*

##### George C. Weimer Elementary School

An anticipated demolition and site reclamation project would occur at George C. Weimer Elementary. The demolition and reclamation project would be anticipated at \$200,000.00.

##### Alban Elementary School

No anticipated construction is needed to accommodate the students from George C. Weimer.

##### Bridgview Elementary School

No anticipated construction is needed to accommodate the students from George C. Weimer.

#### County Expense Fund History

*Five-year history of the county's unrestricted general current expense fund balance and that balance as a percentage of the county's approved levy estimate.*

<i>Year</i>	<i>Unrestricted General Current Expense Fund Balance</i>	<i>Approved Levy Estimate</i>	<i>Percentage of Approved Levy Estimate</i>
2022	\$52,668,539.00	\$230,870,062.00	22.81%
2021	\$41,235,334.00	\$239,881,973.00	17.19%
2020	\$51,430,753.00	\$237,323,995.00	21.67%
2019	\$29,080,399.00	\$226,766,487.00	12.82%
2018	\$35,071,404.00	\$225,541,222.00	15.55%

### 3.2.d. Personnel

#### County Procedures

#### Analysis of Anticipated Personnel Changes

*An analysis of the effect the proposed school closure or consolidation will have on professional and service personnel. The analysis shall include, at a minimum, the following data regarding the anticipated increases or decreases in employment as a result of this proposed closure or consolidation:*

George C. Weimer Elementary School – Current School Personnel Data Chart				
Professional Personnel	Administration	Teachers	Counselor	Nurse
<i>number professional personnel currently employed at the affected school(s);</i>	1	11	1	0
Service Personnel	Cooks	Aides	Custodians	Secretary
<i>number service personnel currently employed at the affected school(s);</i>	2	3	2	1

Current Personnel

Alban Elementary School – Current Before Proposed Action				
Professional Personnel	Administration	Teachers	Counselor	Nurse
<i>number professional personnel currently employed at the affected school(s);</i>	1	18	1	0
Service Personnel	Cooks	Aides	Custodians	Secretary
<i>number service personnel currently employed at the affected school(s);</i>	3	1	2	1

Current Personnel

Bridgeview Elementary School – Current Before Proposed Action				
Professional Personnel	Administration	Teachers	Counselor	Nurse
<i>number professional personnel currently employed at the affected school(s);</i>	2	25	1	0
Service Personnel	Cooks	Aides	Custodians	Secretary
<i>number service personnel currently employed at the affected school(s);</i>	4.5	8	3.5	1

Current Personnel

Current Affected School Total – Before Proposed Action				
Professional Personnel	Administration	Teachers	Counselor	Nurse
<i>total number of professional personnel currently employed at all affected schools;</i>	4	54	3	0
Service Personnel	Cooks	Aides	Custodians	Secretary
<i>total number of service personnel currently employed at all affected schools;</i>	9.5	12	7.5	3

Current Personnel

### 3.2.d. Personnel

#### County Procedures

Alban Elementary School Total – Anticipated After Proposed Action				
Professional Personnel	Administration	Teachers	Counselor	Nurse
<i>total number of professional personnel that are anticipated to be employed at the affected school(s) upon the completion of the closure or consolidation;</i>	1	22	1	0
Service Personnel	Cooks	Aides	Custodians	Secretary
<i>total number of service personnel that are anticipated to be employed at the affected school(s) upon the completion of the closure or consolidation;</i>	3	3	2	1

Anticipated Personnel

Bridgeview Elementary School Total – Anticipated After Proposed Action				
Professional Personnel	Administration	Teachers	Counselor	Nurse
<i>total number of professional personnel that are anticipated to be employed at the affected school(s) upon the completion of the closure or consolidation;</i>	2	26	1	0
Service Personnel	Cooks	Aides	Custodians	Secretary
<i>total number of service personnel that are anticipated to be employed at the affected school(s) upon the completion of the closure or consolidation;</i>	4.5	8	3.5	1

Anticipated Personnel

Identify Affected School – Anticipated Net Change After Proposed Action				
Professional Personnel	Administration	Teachers	Counselor	Nurse
<i>the anticipated net change in professional personnel due to the proposed closure or consolidation</i>	-1	-6	-1	0
Service Personnel	Cooks	Aides	Custodians	Secretary
<i>the anticipated net change in service personnel due to the proposed closure or consolidation</i>	-2	-1	-2	-1

Anticipated Personnel



### 3.2.d. Personnel

#### County Procedures

Identify Affected School – Attrition and Reduction in Force Summary - Professional				
Professional Personnel	Administration	Teachers	Counselor	Nurse
<i>decrease that will occur through attrition</i>	0	0	0	0
<i>decrease that will occur through reduction in force</i>	1	6	1	0
Service Personnel	Cooks	Aides	Custodians	Secretary
<i>decrease that will occur through attrition</i>	0	0	0	0
<i>decrease that will occur through reduction in force</i>	2	1	2	1

Anticipated Personnel

### 3.2.e. Transportation

#### County Procedures

#### Analysis of Anticipated Transportation Time Changes

*Explain any negative variances of 126CSR172, Policy 6200, Handbook on Planning School Facilities (Policy 6200), section 202.02, and the effects the variances may have on transportation. Provide the following bus route data and travel times:*

#### Current and Difference of Travel Times

*List the current travel time by bus route for students in the communities of the schools planned for closure or consolidation and the estimated increase or decrease in travel time as a result of the closure; and*

#### Weimer Elementary School

Route	Community	Current Travel Time	Estimated Time after Closure or Consolidation	Net Increase or Decrease
Route 1708	Jefferson	18 Min	25 Min	7 Min Increase
Route 1907	Green Valley	25 Min	30 Min	5 Min Increase

Transportation Table 1

#### Alban Elementary School

Route	Community	Current Travel Time	Estimated Time after Closure or Consolidation	Net Increase or Decrease
Route 1909	Spruce Street	11 Min	11 Min	0 Min
Route 2101	Walnut Street	7 Min	7 Min	0 Min
Route 1912	Washington Avenue	5 Min	5 Min	0 Min

Transportation Table 2

#### Bridgeview Elementary School

Route	Community	Current Travel Time	Estimated Time after Closure or Consolidation	Net Increase or Decrease
Route 1516	Chestnut Street	20 Min	20 Min	0 Min
Route 1603	South Charleston	30 Min	30 Min	0 Min

Transportation Table 3

### 3.2.e. Transportation

#### County Procedures

#### Anticipated Routes and Waiver Requests

List all anticipated bus routes after the proposed closure or consolidation with the estimated total one-way travel time for each route. Clearly identify any bus routes that exceed the recommended travel times and any routes which will require a waiver of W. Va. 126CSR92, Policy 4336, West Virginia School Bus Transportation Regulations, Procedures, and Specifications for the Design and Equipment of School Buses.

#### Alban Elementary School

Route	Community	One-way Travel Time	Amount Exceeding Recommended Travel Times	Is a Waiver of W. Va. 126CSR92, Policy 4336 Required (Yes / no)
Route 1907	Green Valley	30 Min	0 Min	No
Route 1909	Spruce Street	11 Min	0 Min	No
Route 2101	Walnut Street	7 Min	0 Min	No
Route 1912	Washington Avenue	5 Min	0 Min	No

Transportation Table 4

#### Bridgeview Elementary School

Route	Community	One-way Travel Time	Amount Exceeding Recommended Travel Times	Is a Waiver of W. Va. 126CSR92, Policy 4336 Required (Yes / no)
Route 1708	Jefferson	25 Min	0 Min	No
Route 1516	Chestnut Street	20 Min	0 Min	No
Route 1603	South Charleston	30 Min	0 Min	No

Transportation Table 5

### 3.2.f. Educational Program

County Procedures

#### Analysis and Assurance of Consideration

*Complete a projected educational program improvement analysis which includes a statement of assurance that the following have been considered:*

*Affected School Name(s)*

George C. Weimer Elementary School, Alban Elementary School, and Bridgeview Elementary School

*In the preparation of the documents regarding the closure and/or consolidation of the above referenced school, the following codes and policies have been considered:*

*Please check each item that was considered.*

- ☐ W. Va. 126CSR16, Policy 2419, Regulations for the Education of Students with Exceptionalities,
- ☐ W. Va. 126CSR42, Policy 2510, Assuring the Quality of Education: Regulations for Education Programs,
- ☐ W. Va. 126CSR44 et al., Policy 2520, Content Standards and Objectives for West Virginia Schools,
- ☐ WVBE Policy 6200-Planning of School Facilities
- ☐ WVBE Policy 6204-School Closings or Consolidations

---

Superintendent

---

Date:

### 3.3. & 3.4. Public Notices and Hearings

#### County Procedures

#### Notice of Public Hearing(s)

*The county must provide notice for the public hearing which shall be advertised through a Class III legal advertisement for three weeks prior to the date of the hearing in a newspaper in general circulation in the locality of any school to be closed or consolidated and in the locality of any school that has been designated by the county to receive students from the schools to be closed or consolidated. The notice also shall be posted in all schools as provided in section 3.3.5 at least 30 days prior to the date of hearing.*

*If the county will be applying for SBA funding, the procedures must be completed before the SBA will consider a project for funding, as further outlined in section 6. If the county will be utilizing local funding for a construction project related to the closure or consolidation, the procedures must be completed prior to the initiation of construction. For all other closures and consolidations, counties must complete the procedures on or before December 31st of the calendar year prior to the calendar year in which the closures or consolidations are to be effective.*

## NOTICE OF PUBLIC HEARING

**Kanawha County Schools**

**W.Va. 18-5-13a**

**W. Va. Board of Education Policy 6204**

DATE and TIME: May 4, 2023, at 6:00 p.m.

Sign in between 5:00 and 5:55 p.m. to speak

ALTERNATIVE DATE and TIME: If, in the event of inclement weather or other factors beyond the control of the board, the hearing cannot take place at the date and time set forth above, the hearing will be held on May 11, 2023, at 6:00 p.m.

PLACE: St. Albans High School Auditorium, 2100 Kanawha Terrace, St. Albans, WV 25177. The hearing location is subject to change if, at the time the meeting is called to order, it is determined that the meeting location is of insufficient size to accommodate those wishing to attend.

The hearing may not continue beyond 11:00 p.m. In the event the hearing is not concluded by 11:00 p.m., the hearing may recess, to continue on dates designated and announced by the board just prior to the hearing recess, to be continued day-to-day until concluded.

**Proposed Action of the Board of Education of the County of Kanawha, West Virginia:**

**George C. Weimer Elementary School** -Close and transfer of students to Alban Elementary and Bridgeview Elementary.

### 3.3. & 3.4. Public Notices and Hearings

#### County Procedures

**Hearing Procedures:** A representative of Kanawha County Schools will provide an oral summary of the reasons and supporting data in connection with the proposed action of the Board. For a period of fifty-five minutes prior to the commencement of the public hearing, persons may sign a register for the purpose of making statements, offering testimony and questioning school officials. Persons wishing to speak about the effects of the proposed closure of George C. Weimer Elementary and consolidation into Alban Elementary and Bridgeview Elementary, as well as those who wish to speak as members of the general public, will be recognized in the order in which they have signed the register. Each person shall be limited to three/five minutes. Written statements may be submitted in lieu of oral statements or testimony and must be submitted prior to the conclusion of the hearing. Any written statement will be given full consideration before the board takes any final action.

**Reasons and supporting data available for public inspection:** Written reasons and supporting data in connection with the proposed action of the Board are available for public inspection beginning March, 29, 2023, through May 4, 2023, between the hours of 7:30 a.m. and 4:00 p.m. in the Office of the Superintendent of Kanawha County Schools located in Room 222, 200 Elizabeth Street, Charleston, West Virginia. The reasons and the supporting data in connection with the proposed actions are also available for inspection at George C. Weimer Elementary, Alban Elementary and Bridgeview Elementary.

George C. Weimer Elementary School, Alban Elementary School, and Bridgeview Elementary School

First Run: April 3, 2023

Second Run: April 10, 2023

Third Run: April 17, 2023

Qualified Newspaper Name: Charleston Gazette Mail

### **3.3. & 3.4. Public Notices and Hearings**

#### County Procedures

#### **Proof of Public Hearing(s) Notice**

*contain proof that the hearings were properly advertised with a class III legal advertisement.*

*Such proof can be satisfied with:*

- *a notarized letter from the county's qualified newspaper(s) for legal notices, as defined by the West Virginia Secretary of State, that specifically states the three dates in which the newspaper ran the county's public hearing notification; or*
- *a scan or download for each of the 3 required legal advertisements from the county's qualified newspaper(s) for legal notices, as defined by the West Virginia Secretary of State, where the full legal notification and date of publication is provided and legible.*

[See Appendix for this Documentation](#)

#### **Public Hearing(s) Documentation**

*Provide documentation of all hearings, motions, written public comments, a synopsis or transcript of verbal public comments, and other actions concerning the proposed school closings and consolidations.*

[See Appendix for this Documentation](#)

### 3.6. County Board Actions

#### County Procedures

#### **County Board Vote(s)**

*After the vote and following compliance with sections 3.4 and 3.5, and prior to the implementation of any school closure or consolidation and following compliance with all statutory and regulatory provisions, the county must file a request for school closure and/or consolidation with the WVBE for approval.*

#### **Comprehensive Educational Facilities Plan (CEFP)**

*Identify if the proposed school closing or consolidation was included in the county's approved CEFP. If the county's approved CEFP did not contain the proposed closure or consolidation, the county must also submit a request to amend their CEFP. Such request shall include all required CEFP amendment forms.*

The closure of George C. Weimer Elementary School is not congruent with Kanawha County Schools 2020- 2030 CEFP Plan.

#### **School Building Authority of WV**

*Identify if the proposed school closing or consolidation is contingent upon receiving funding from the SBA.*

The closure of George C. Weimer Elementary School is not contingent upon SBA funding. The current George C. Weimer Elementary school students would be absorbed into Alban Elementary School and Bridgeview Elementary School.



### 3.6.a. Superintendent Verification of Board Actions

#### County Procedures

George C. Weimer Elementary School, Alban Elementary School, and Bridgeview Elementary School

Date of hearing: Thursday May 4, 2023 at 6:00 P.M.

Date of board approval: Thursday May 4, 2023 following hearing

Kanawha County requests the West Virginia Board of Education approve the following.

Closure and Consolidation of George C. Weimer Elementary School into Alban Elementary School and Bridgeview Elementary School.

- ☐ *The county assures that the applicable sections of the W. Va. Codes §18-5-13 and §18-5-13a, and WVBE Policies 6200 and 6204 have been addressed.*
- ☐ *This action is justified by the provided supplemental data and information pertinent to the following subjects: enrollment, facilities, finance, personnel, transportation, and educational programs.*
- ☐ *Documentation of all hearings, motions, written public comments, a synopsis or transcript of verbal comments, and other actions concerning the proposed school closings and consolidations were provided in this document.*
- ☐ *All hearings were properly advertised with a class III legal advertisement.*

Thomas E. Williams, Jr., Ed.D.

*Signature of county superintendent attesting to the completion of all requirements as stated in W. Va. Codes §18-5-13 and §18-5-13a and WVBE Policies 6200 and 6204.*

\_\_\_\_\_  
Superintendent

\_\_\_\_\_  
Date:

## Appendix of Supporting Data

*The list should include at a minimum the following data:*

- 1. SBA Worksheet on Building Program Utilization for all affected schools (Required)*
- 2. Supporting Photographs, Floorplans, and other Documentation (As needed)*
- 3. SBA Facility Condition Documentation for all affected schools (Required)*
- 4. Proof of Public Hearing(s) Notice for all affected schools (Required)*
- 5. Public Hearing(s) Documentation for all affected schools (Required)*
- 6. Board minutes indicating the action of the board to approve the closure(s) (Required)*
- 7. Cover letter addressed to the State Superintendent of Schools (Required)*
- 8. Completed superintendent signature pages (Required)*
- 9. Most current October 1<sup>st</sup> certified enrollment for county (Required)*

## Table of Contents Entries

### Table of Contents Sub Entries

#### **Sub Titles**

County Narrative

Sub Notes

Directions

Policy Request

## **Appendix of Supporting Data**

### County Procedures

#### **1. SBA Worksheets on Building Program Utilization**

The supporting School Building Authority of West Virginia's (SBA) Worksheets on Building Program Utilization for:

George C. Weimer Elementary School Utilization Sheet

Alban Elementary School Utilization Sheet

Bridgeview Elementary School Utilization Sheet

Alban Elementary School Utilization Sheet (Combined)

Bridgeview Elementary School Utilization Sheet (Combined)

School Building Authority of West Virginia  
**BUILDING PROGRAM UTILIZATION WORKSHEET**  
Worksheet #3  
**SBA FORM 301-C**

NOTE: THIS FORM MAY BE SUBSTITUTED FOR A SIMILAR SBA-APPROVED DIGITAL INSTRUMENT

County: Kanawha County      School: George C. Weimer Elementary School      Current Enrollment: 138

<i>Classroom Types</i>	<i>Number Of Classroom Types</i>	<i>x</i>	<i>Maximum Pupils/ Class Capacity</i>	<i>=</i>	<i>Total Program Capacity</i>
Pre-K	1		20		20
Kindergarten	1		20		20
General Classrooms	10		25		250
Spec Ed LVL 1	1		6		6
Spec Ed LVL 2	1		12		12
TOTALS:	14				308

Program Utilization ( $\frac{138}{\text{Current Enrollment}}$  divided by  $\frac{308}{\text{Total Program Capacity}}$ ) times 100 = 44.8 %  
Program Utilization

SCHOOLS PROGRAM UTILIZATION = 44.8 %      Desirable Program Capacity = 85%

## Instructions for Calculating Building Program Utilization

**Elementary School** – Calculate the number and type of classrooms using the maximum program capacity for each self-contained regular classroom. Assume for example – that all students are seated in a first period block without pullout programs. Do not include library/media, cafeteria, itinerant spaces, resource rooms, or optional academic classrooms such as art, music and computer labs that act as pullout programs to support the core curriculum.

**Secondary School** – Middle/Junior High School programs where various schedules exist, calculate the number and type of classrooms using the maximum program capacity for each regular or special classroom. Assume for example, that all students are seated in a first period block and exclude library/media, commons or any space that cannot be used for other course offerings in the daily capacity of each facility. The maximum capacity for instructional spaces for specialty classrooms is counted once. A specialty classroom may be available throughout the school day but due to its specialized design or equipment it is rendered impractical to use for other instructional purposes.

SBA 301-C



School Building Authority of West Virginia  
**BUILDING PROGRAM UTILIZATION WORKSHEET**  
 Worksheet #3  
**SBA FORM 301-C**

NOTE: THIS FORM MAY BE SUBSTITUTED FOR A SIMILAR SBA-APPROVED DIGITAL INSTRUMENT

County: Kanawha County      School: Bridgeview Elementary School      Current Enrollment: 422

<i>Classroom Types</i>	<i>Number Of Classroom Types</i>	<i>x</i>	<i>Maximum Pupils/ Class Capacity</i>	<i>=</i>	<i>Total Program Capacity</i>
Pre-K	2		20		40
Kindergarten	3		20		60
General Classrooms	20		25		500
Spec Ed LVL 1	3		6		18
Spec Ed Level 2	1		12		12
TOTALS:	29				630

Program Utilization ( $\frac{422}{\text{Current Enrollment}}$  divided by  $\frac{630}{\text{Total Program Capacity}}$ ) times 100 =  $\frac{67.0}{\text{Program Utilization}}$  %

SCHOOLS PROGRAM UTILIZATION = 67.0 %      Desirable Program Capacity = 85%

### Instructions for Calculating Building Program Utilization

**Elementary School** – Calculate the number and type of classrooms using the maximum program capacity for each self-contained regular classroom. Assume for example – that all students are seated in a first period block without pullout programs. Do not include library/media, cafeteria, itinerant spaces, resource rooms, or optional academic classrooms such as art, music and computer labs that act as pullout programs to support the core curriculum.

**Secondary School** – Middle/Junior High School programs where various schedules exist, calculate the number and type of classrooms using the maximum program capacity for each regular or special classroom. Assume for example, that all students are seated in a first period block and exclude library/media, commons or any space that cannot be used for other course offerings in the daily capacity of each facility. The maximum capacity for instructional spaces for specialty classrooms is counted once. A specialty classroom may be available throughout the school day but due to its specialized design or equipment it is rendered impractical to use for other instructional purposes.

SBA 301-C

School Building Authority of West Virginia  
**BUILDING PROGRAM UTILIZATION WORKSHEET**  
 Worksheet #3  
**SBA FORM 301-C**

NOTE: THIS FORM MAY BE SUBSTITUTED FOR A SIMILAR SBA-APPROVED DIGITAL INSTRUMENT

County: Kanawha County

School: Alban Elementary School

Receiving Enrollment: 269

<i>Classroom Types</i>	<i>Number Of Classroom Types</i>	<i>x</i>	<i>Maximum Pupils/ Class Capacity</i>	<i>=</i>	<i>Total Program Capacity</i>
Pre-K	2		20		40
Kindergarten	3		20		60
General Classrooms	13		25		325
Spec Ed LVL 1	1		6		6
Spec Ed Level 2	1		12		12
TOTALS:	20				443

Program Utilization ( $\frac{269}{443}$  divided by  $\frac{443}{443}$ ) times 100 =  $\frac{60.7}{100}$  %  
 Current Enrollment Total Program Capacity Program Utilization

SCHOOLS PROGRAM UTILIZATION =  $\frac{60.7}{100}$  % Desirable Program Capacity = 85%

### Instructions for Calculating Building Program Utilization

**Elementary School** – Calculate the number and type of classrooms using the maximum program capacity for each self-contained regular classroom. Assume for example – that all students are seated in a first period block without pullout programs. Do not include library/media, cafeteria, itinerant spaces, resource rooms, or optional academic classrooms such as art, music and computer labs that act as pullout programs to support the core curriculum.

**Secondary School** – Middle/Junior High School programs where various schedules exist, calculate the number and type of classrooms using the maximum program capacity for each regular or special classroom. Assume for example, that all students are seated in a first period block and exclude library/media, commons or any space that cannot be used for other course offerings in the daily capacity of each facility. The maximum capacity for instructional spaces for specialty classrooms is counted once. A specialty classroom may be available throughout the school day but due to its specialized design or equipment it is rendered impractical to use for other instructional purposes.

SBA 301-C

School Building Authority of West Virginia  
**BUILDING PROGRAM UTILIZATION WORKSHEET**  
 Worksheet #3  
**SBA FORM 301-C**

NOTE: THIS FORM MAY BE SUBSTITUTED FOR A SIMILAR SBA-APPROVED DIGITAL INSTRUMENT

County: Kanawha County      School: Bridgeview Elementary School      Receiving Enrollment: 438

<i>Classroom Types</i>	<i>Number Of Classroom Types</i>	<i>x</i>	<i>Maximum Pupils/ Class Capacity</i>	<i>=</i>	<i>Total Program Capacity</i>
Pre-K	2		20		40
Kindergarten	3		20		60
General Classrooms	20		25		350
Spec Ed LVL 1	3		6		18
Spec Ed Level 2	1		12		12
TOTALS:	29				630

Program Utilization ( $\frac{438}{\text{Current Enrollment}}$  divided by  $\frac{630}{\text{Total Program Capacity}}$ ) times 100 =  $\frac{69.5}{\text{Program Utilization}}$  %

SCHOOLS PROGRAM UTILIZATION = 69.5 %      Desirable Program Capacity = 85%

### Instructions for Calculating Building Program Utilization

**Elementary School** – Calculate the number and type of classrooms using the maximum program capacity for each self-contained regular classroom. Assume for example – that all students are seated in a first period block without pullout programs. Do not include library/media, cafeteria, itinerant spaces, resource rooms, or optional academic classrooms such as art, music and computer labs that act as pullout programs to support the core curriculum.

**Secondary School** – Middle/Junior High School programs where various schedules exist, calculate the number and type of classrooms using the maximum program capacity for each regular or special classroom. Assume for example, that all students are seated in a first period block and exclude library/media, commons or any space that cannot be used for other course offerings in the daily capacity of each facility. The maximum capacity for instructional spaces for specialty classrooms is counted once. A specialty classroom may be available throughout the school day but due to its specialized design or equipment it is rendered impractical to use for other instructional purposes.

SBA 301-C



## Appendix of Supporting Data

### County Procedures

## 2. Supporting Photographs, Floorplans, and other Documentation

### George C. Weimer Elementary School

































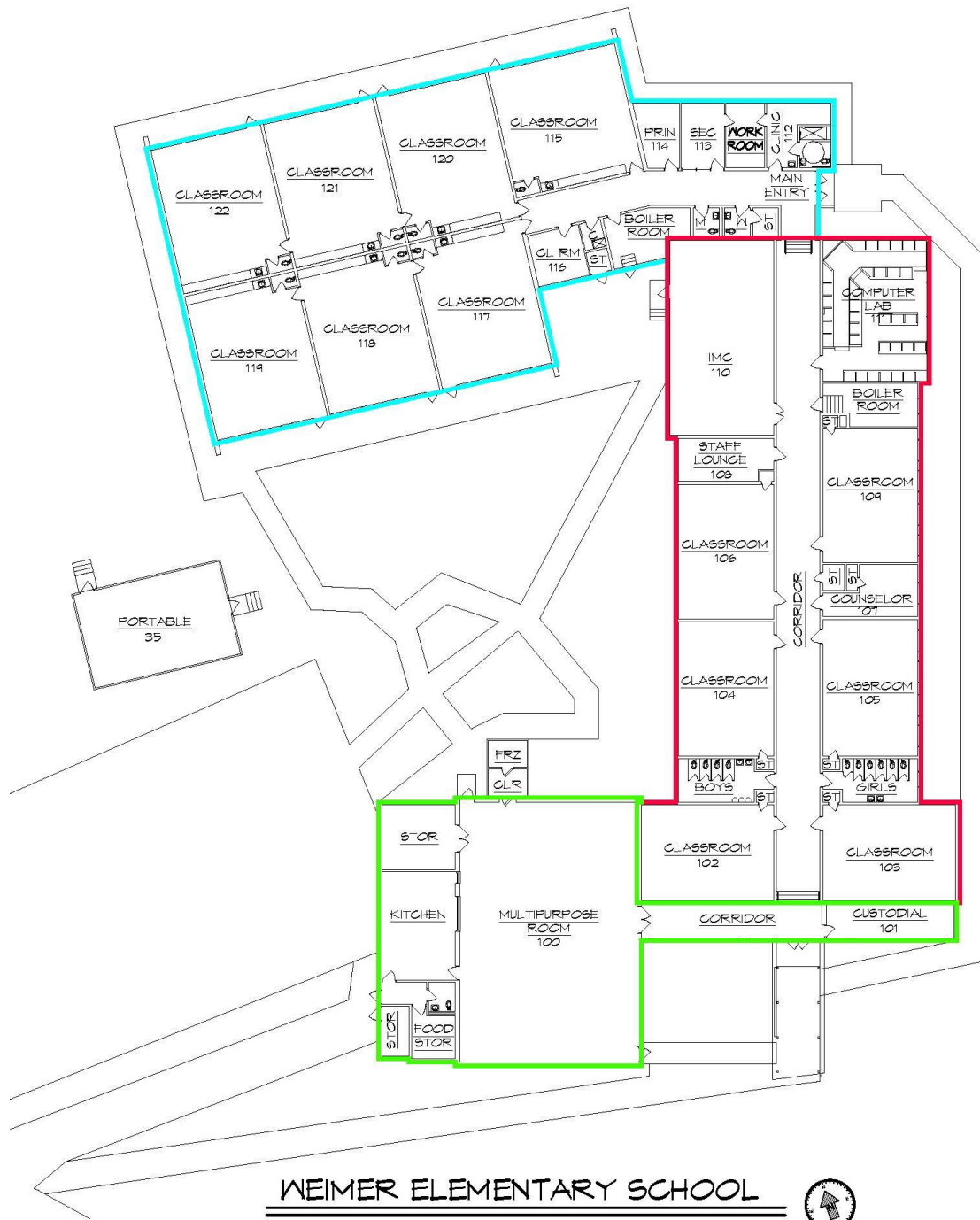












1951 ORIGINAL CONSTRUCTION	9,288 SQ. FT.
1961 ADDITION	8,602 SQ. FT.
1964 ADDITION	4,331 SQ. FT.
TOTAL SCHOOL	22,221 SQ. FT.

MARCH 1, 2023

Alban Elementary School



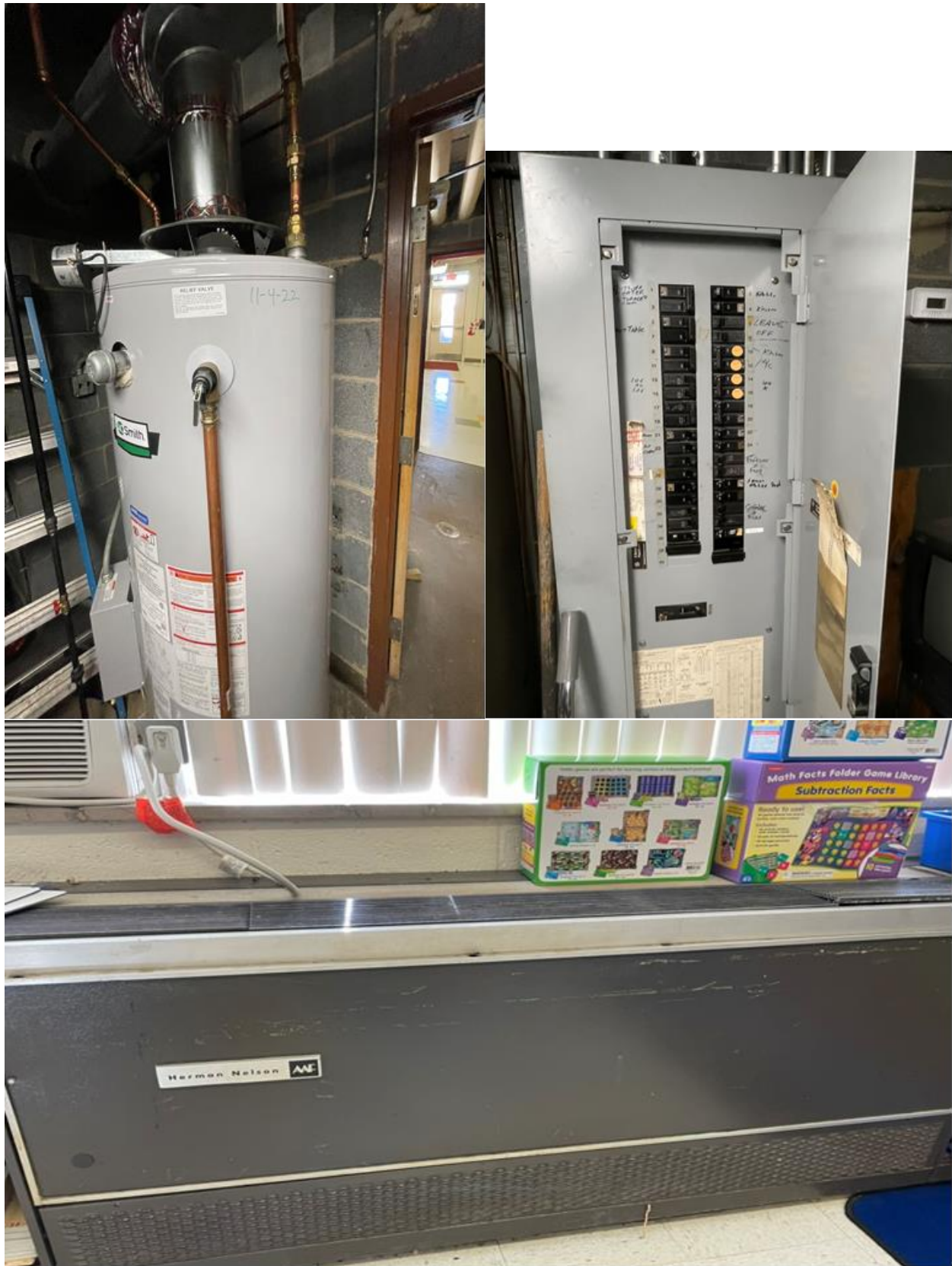






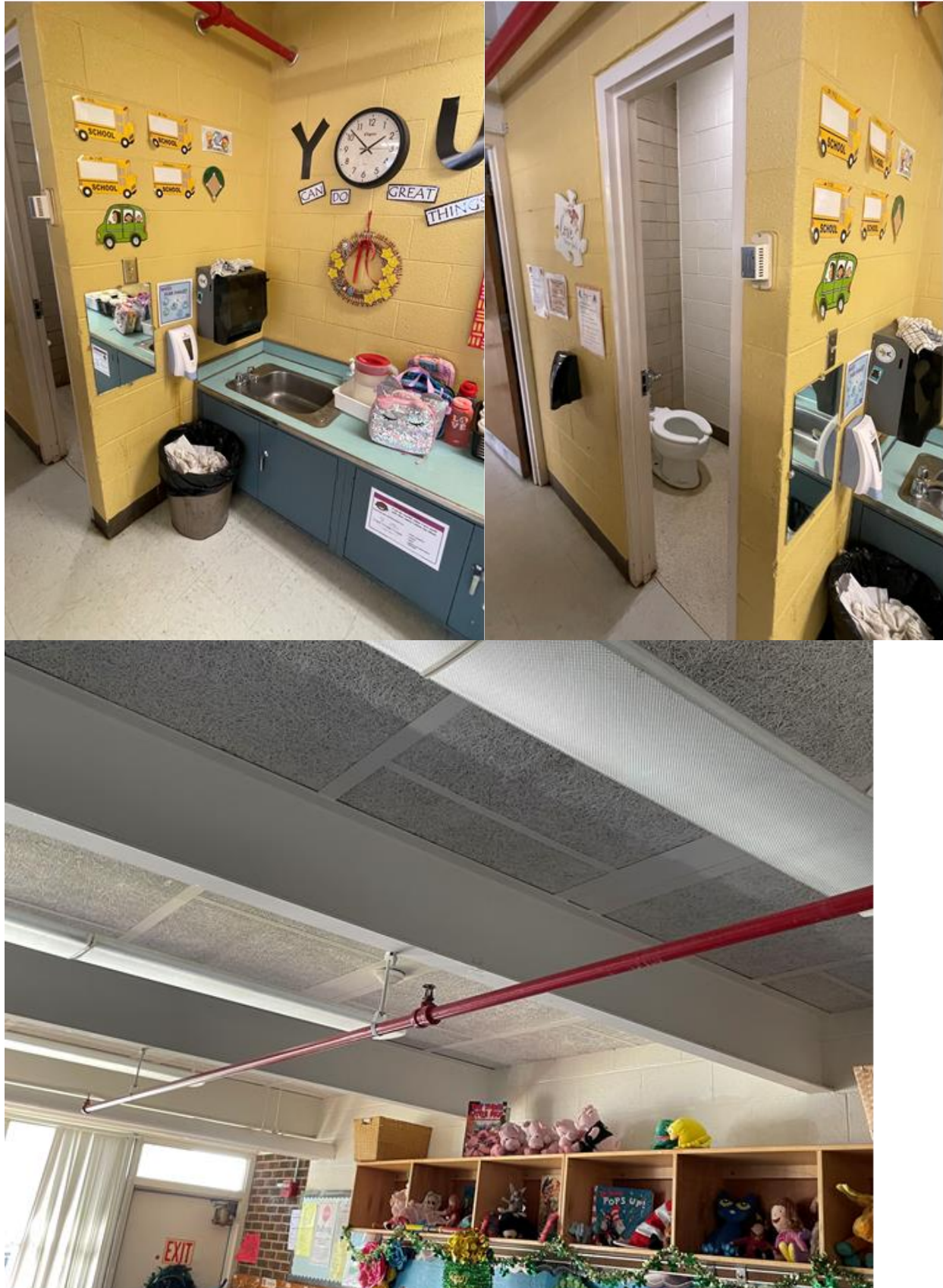
















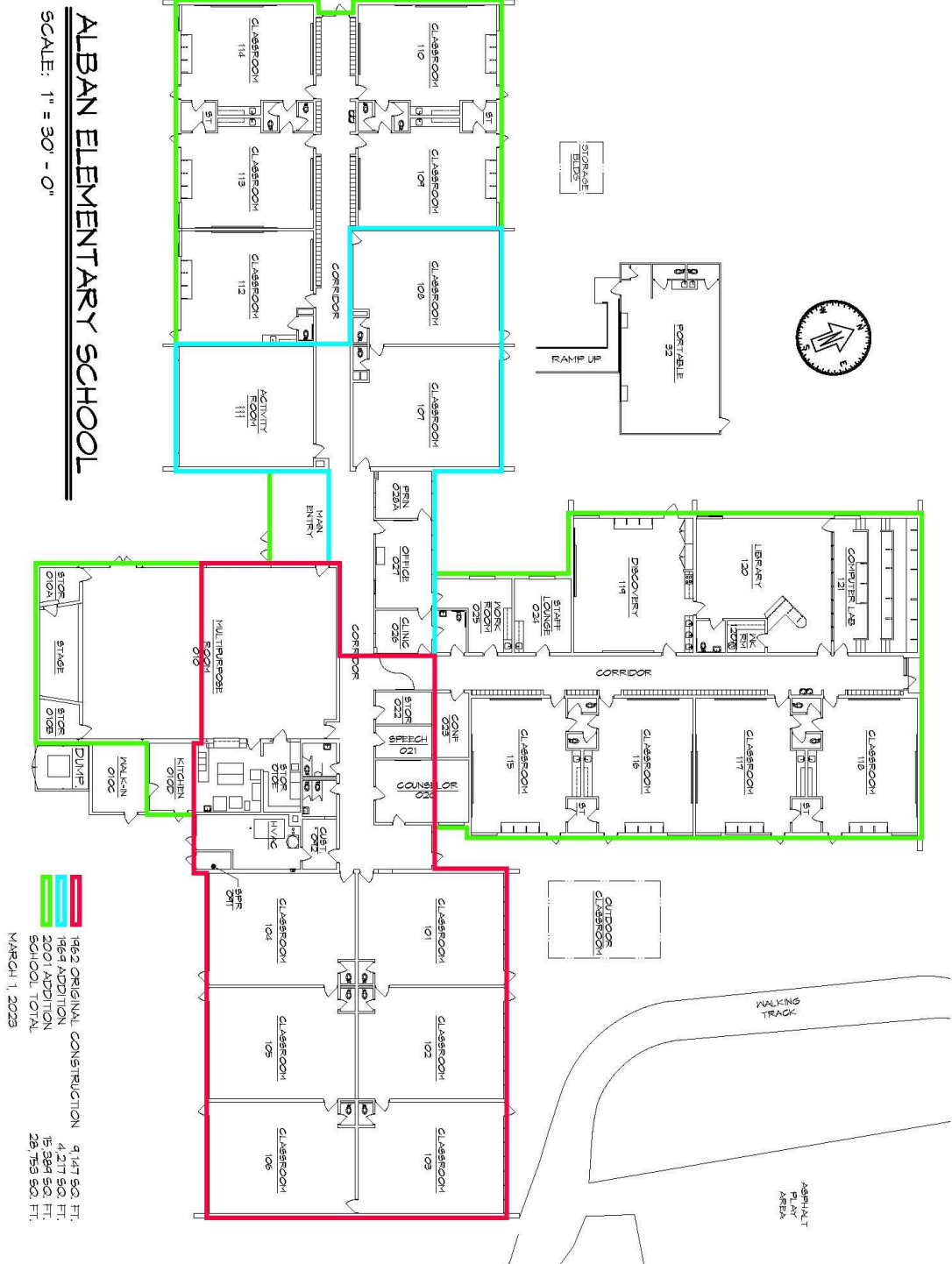












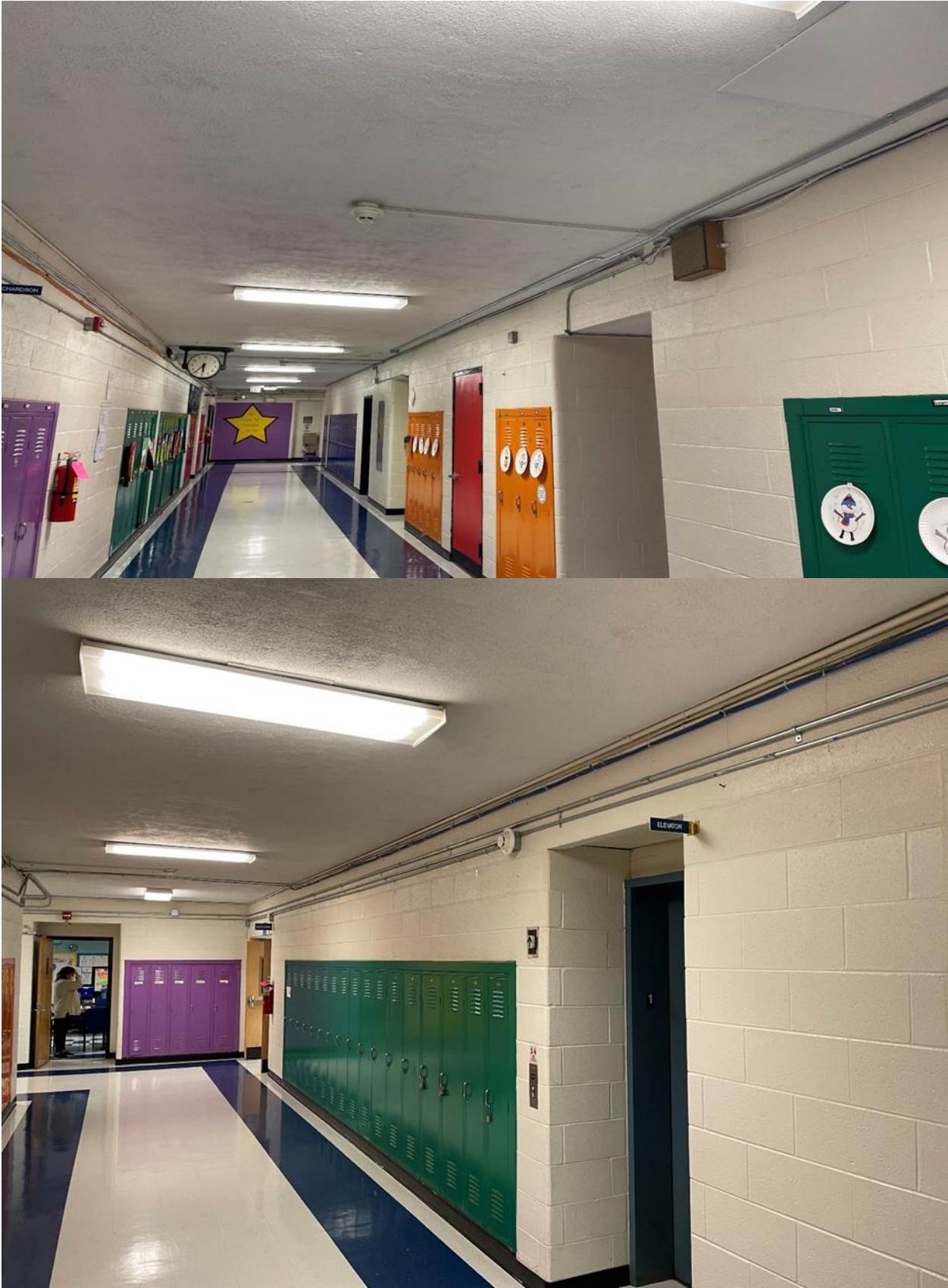
Bridgeview Elementary School







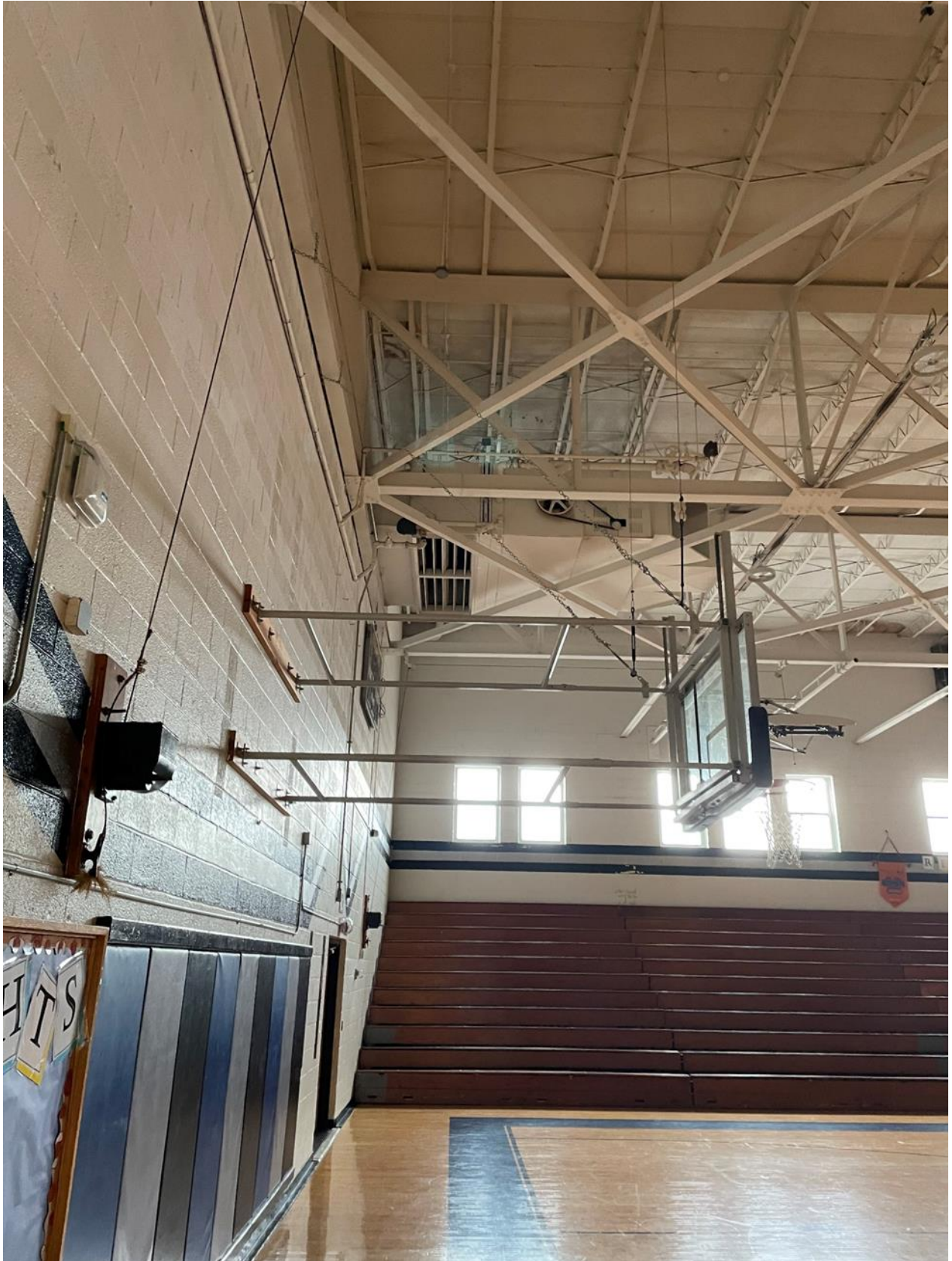




















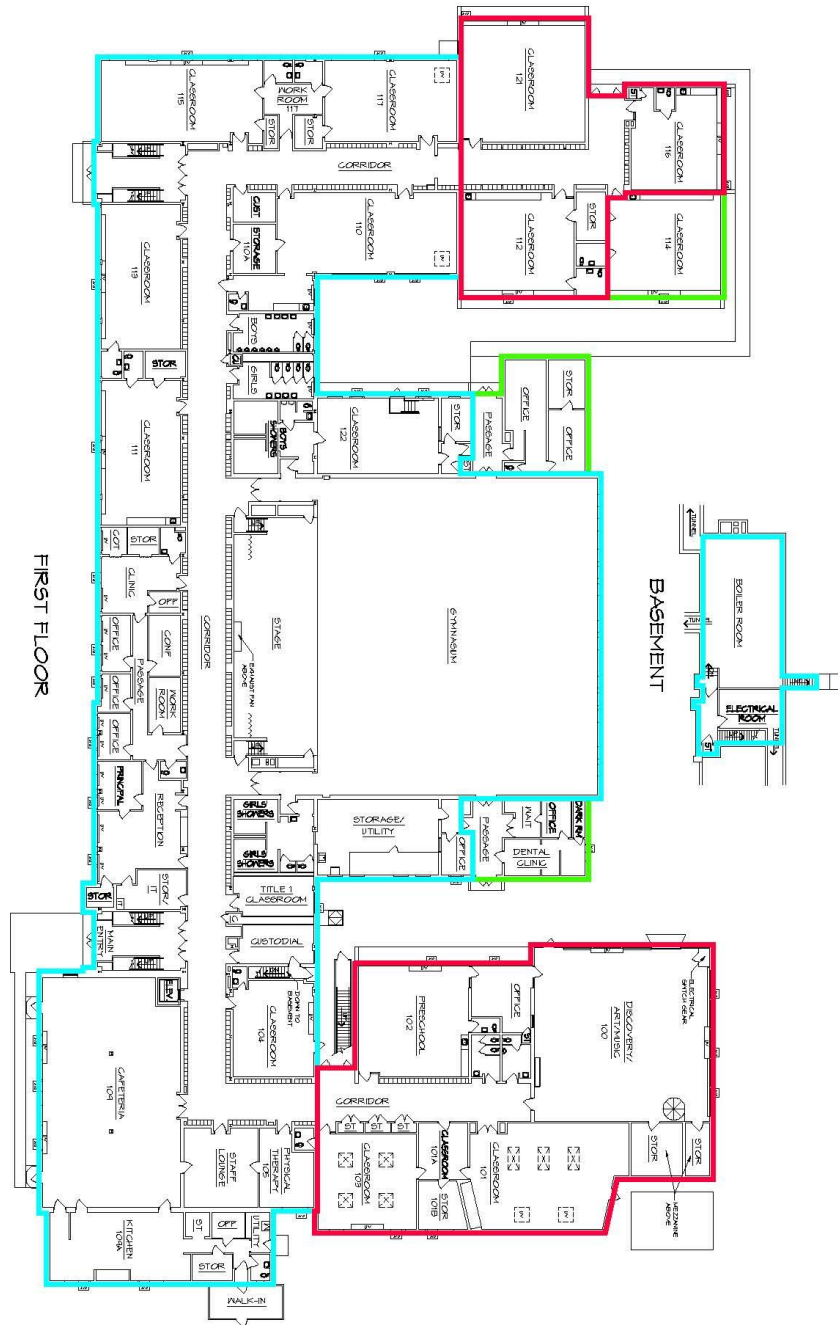
# BRIDGEVIEW ELEMENTARY SCHOOL

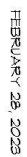
SCALE: 1" = 40' - 0"



<span style="border: 1px solid blue; display: inline-block; width: 10px; height: 10px;"></span>	1953 ORIGINAL CONSTRUCTION	52,916 SQ. FT.
<span style="border: 1px solid green; display: inline-block; width: 10px; height: 10px;"></span>	1962 ADDITION	11,354 SQ. FT.
<span style="border: 1px solid red; display: inline-block; width: 10px; height: 10px;"></span>	1964 ADDITION	2,570 SQ. FT.
	SCHOOL TOTAL	66,845 SQ. FT.

FEBRUARY 28, 2023







## **Appendix of Supporting Data**

County Procedures

### **3. SBA Facility Condition Documentation**

The supporting School Building Authority of West Virginia's (SBA) Facility Evaluation Form for:

George C. Weimer Elementary School Facility Evaluation Form

Alban Elementary School Facility Evaluation Form

Bridgeview Elementary School Facility Evaluation Form

[illegible]

School Building Authority of West Virginia  
SBA Form 134 Data Collection Form  
Building Information Sheet

Building Gross Square Feet	Main Building	Year Built Basement 22,213 (Y/N)	1951 N	# Floors (incl. Basement)	1
----------------------------------	---------------	---	-----------	------------------------------	---

System	Material	Count	Year Installed If different from Building	Condition	Notes
Conveying Systems				Not Present	29 of 29 systems have been evaluated
Electrical - Branch Wiring				2 - Below Average	Most of the wiring is 60 year old.
Electrical - Lighting	Fluorescent			3 - Average	
Electrical - Emergency Lighting and Exit Signs				3 - Average	
Electrical - Service and Distribution				2 - Below Average	The MDP is a retrofit of 400 A 208/120 V 3 phase panel into an existing enclosure. Adjacent panel cabinets were damaged by a boiler fire (date unknown).
Equipment & Furnishings - Institutional Equipment	Includes Commercial			3 - Average	
Exterior Enclosure - Exterior Doors	Normal			3 - Average	Door and frame out of multipurpose room is rotting away and will need replaced.
Exterior Enclosure - Exterior Wall Finishes	Masonry			3 - Average	
Exterior Enclosure - Exterior Windows	Single Pane, Fixed, All Frame Types			2 - Below Average	
Fire Protection - Fire Alarm & Detection				3 - Average	Fire Alarm Control Panel is Simplex 2001 (1982) - Siemens FS-250
Fire Protection - Sprinklers and Standpipes				Not Present	
HVAC - Terminal & Package Units				Not Present	See Overview for details.
HVAC - Distribution System				2 - Below Average	Classroom HVAC Units (connections in Classrooms and HW Connections in Offices). 1951 Addition: 2 pumps serve SW Unit Ventilation in Classrooms.
HVAC - Heat Generating Systems				2 - Below Average	1951 Building. Original Boiler has no tag and experienced fire or flame roll-out at an unknown date. 1951 Addition: Atmospheric Boiler with 1450 mbh input with no date tag.
HVAC - Cooling Generating Systems				Not Present	
HVAC - Controls and Instrumentation				1 - Inadequate	Pneumatic. When Unit Vents overheat. Teachers open access doors and opening UV fans.
Interior Construction - Interior Doors	Solid Core Wood			3 - Average	
Interior Construction - Specifications and Casework				3 - Average	
Interior Finishes - Ceiling Finishes	Exposed			3 - Average	Tertium decking is the primary ceiling. Some areas are ACT and some are 12x24 panels.
Interior Finishes - Floor Finishes	Vinyl Composition Tile			3 - Average	The original building has VCT installed over wood floors. Some classrooms still have exposed wood floors.
Interior Finishes - Gymnasium Floor Finishes				3 - Average	The gym is the multipurpose room with VCT flooring.
Interior Finishes - Wall Finishes	Painted CMU			3 - Average	There are a couple of cracks present in the high walls of the multipurpose room.
Plumbing - Domestic Water Distribution				3 - Average	
Plumbing - Fixtures	Metal			2 - Below Average	Older plumbing fixtures, floor type urinals have exposed branch piping.
Plumbing - Rain Water Drainage				3 - Average	
Plumbing - Sanitary Sewer				3 - Average	
Roofing - Roof Coverings	Modified Bitumen			2 - Below Average	Roof was not fully accessible, but portion viewed will need replaced in less than 10 years.
Security System				3 - Average	
Technology Infrastructure				3 - Average	



School Building Authority of West Virginia  
SBA Form 134 Data Collection Form  
Facility General Information Sheet

1 - Facility General Information Worksheet

LEA ID:	039276	Assessment Date:	10/14/19
County:	Kanawha	Total Gross Square Feet:	22,213
Facility Name:	George C. Weimer Elementary School	Original Year of Construction:	1951

Energy Indexes

(List the total amount of each fuel source used for one year)

Source (Units)	Consumption per Year	Conversion (BTU/Unit)	Total BTU
Electric (Kilowatt-Hrs)	258,240	3,412	881,151,034
Natural Gas (MCF) --OR--	1,526	1,037,000	1,582,150,900
Natural Gas (Decotherms)		1,000,000	-
Coal (Tons)		24,000,000	-
#2 Fuel Oil (Gallons)		138,874	-
Propane (Pounds)		21,600	-
Used Oil (Gallons)		125,000	-
Wood Chips (Tons)		16,500,000	-
Other (specify)			-
Amount:			
Units:			

Worksheet Links:

Total BTU: 2,463,301,934  
Energy Utilization Index (EUI): 110,895

School Building Authority of West Virginia  
SBA Form 134 Data Collection Form  
Site Evaluation Sheet

LEA ID:	039276	Assessment Date:	10/14/19
County:	Kanawha	Total Gross Square Feet:	22,213
Facility Name:	George C. Weimer Elementary S	Original Year of Construction:	1951

2 - Site Evaluation Worksheet

Site

City or Rural:	City
Actual Acres:	4.25
Useable Acres:	4
Site adequate for expansion:	Yes
Are public parks/areas adjacent:	No
% site out of flood plain:	100%
% site in flood plain:	0%

Site Remarks: Edge of site is shared with McKinley Middle School

Overall Site Condition: 2-Below Average

Drainage

Drainage Remarks:

Overall Drainage Condition: 3-Average

Parking

Parking Adequately Lit:	No
Adequacy of Parking:	2-Below Average

Parking Remarks:

Overall Parking Condition: 2-Below Average

Bus Loading

Bus Loading Adequate:	No
-----------------------	----

Bus Loading Remarks:

Overall Bus loading Condition: 2-Below Average

Access Roads

Adequacy of On-Site Access Roads:	2-Below Average
Adequacy of Off-Site Access Roads:	3-Average

Access Roads Remarks:

Overall Access Road Condition:

3-Average

**Playfields/Playcourts**

Adequacy of Playfields:

3-Average

Adequacy of Playcourts:

3-Average

Playfields/Playcourts Remarks:

Overall Playfield/Playcourts Condition:

3-Average

**Site Utilities**

**Electrical Services:**

Phase:

3

Voltage:

208/120

Amps:

400

Electric Utility Company:

AEP

Main Service Feed into Building:

Overhead

Electrical Service Remarks:

Overall Electrical Service Condition:

3-Average

**Fuel Sources:**

Natural Gas:

Yes

Coal:

Fuel Oils:

Propane:

Other (Specify):

Fuel Line Size (inches):

3"

Fuel Utility Company:

Mountaineer Gas

Fuel Sources Remarks:

Overall Fuel Sources Condition:

3-Average

**Water Sources:**

Public:

Yes

Well:

Water Line Size (inches):

2-1/2" reduced to 2"

Water Utility Company:

St. Albans

Water Sources Remarks:

Overall Water Sources Condition:

3-Average



**Sewage Systems:**

Public:

Yes

Septic:

Other (Specify):

Public Service District (PSD):

St. Albans

Sewage System Remarks:

Overall Sewage System Condition:

3-Average

School Building Authority of West Virginia  
SBA Form 134 Data Collection Form  
Building Component Evaluation Sheet

LEA ID:	039276	Assessment Date:	10/14/19
County:	Kanawha	Total Gross Square Feet:	22,213
Facility Name:	George C. Weimer Elementary School	Original Year of Construction:	1951

3 - Building Component Evaluation Worksheet

Building Structures:

Type:

Load Bearing Masonry

Building Structures Remarks:

Overall Building Structure Condition: 3-Average

Floor Structures:

Steel Joist/Concrete (floor area SF):

Wood Joists (floor area SF):

9,510

Slab on Grade (floor area SF):

12,703

Other (specify) / Floor area SF:

Floor Structure Remarks:

Overall Floor Structure Condition: 3-Average

Roof:

Roof Structure:

Steel Joists

Roof Structures Remarks:

Overall Roof Condition: 3-Average

Building Systems:

The systems below are addressed in the FCA data collection tool.

Roof Coverings

Wall Finishes

Ceiling Finishes

Floor Finishes

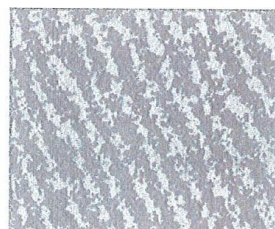
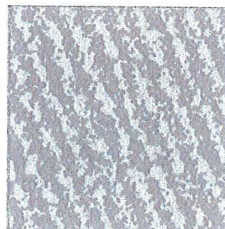
Doors

Windows

HVAC

Electrical

Fire Alarm



Technology Infrastructure:

Sufficient Electrical Capacity:

Yes

3-Average

Power Receptacles Availability:

Yes

3-Average

ID Network Type (if available):  
Inventory Records Hardware  
Other (specify):

Yes	3-Average
Yes	4-Above Average

Deficiencies:

Technology Remarks:

Overall Technology Infrastructure Condition:

3-Average

**Technology Assessment:**

Teacher Training:

4-Above Average

Software Use:

4-Above Average

Purchasing Practices:

4-Above Average

Network Administration:

4-Above Average

Inventory Records

4-Above Average

Other (specify):

Deficiencies:

Technology Remarks:

Overall Technology Condition:

4-Above Average

**School Access Safety Audit:**

Planning:

Deterrence:

Detection:

Delay:

Communication:

Evacuation:

Safety Remarks:

Overall Access Safety Condition:



School Building Authority of West Virginia  
SBA Form 134 Data Collection Form  
Facility Spaces Evaluation / Utilization Analysis Sheet

LEA ID:	039276	Assessment Date:	4/37/52
County:	Kanawha	Total Gross Square Feet:	22,213
Facility Name:	George C. Weimer Elementary School	Original Year of Construction:	1951

Individual School Utilization Analysis									
Classroom Type	Grade Config	Age of Facility	No. of Renovations	Square Ft	Portables	Location (City, St)	Utilization Calculation		
Lowest Grade Level:	PK	69		22,213	0	St. Albans, WV	Current Enrollment		
Highest Grade Level:	5						179		
							Total Program Capacity		
							272		
							Utilization Calculation		
							66%		
							Desirable Utilization		
							85%		
							Difference		
							-19%		

Classroom Type	Number of Class Types (ES)	Number of Class Types (MS)	Number of Class Types (HS)	Max Students Per Room	Total Program Capacity
Pre-Kindergarten (Full Day)	2			20	40
Kindergarten (Full Day)	1			20	20
General Purpose Classroom	8			25	200
Computer Lab	n/a			25	0
Art Lab	n/a			25	0
Music Classroom	n/a			25	0
Special Ed Pull-out	n/a	n/a	n/a	0	0
Special Ed Level 1: (PK-5)	1			6	6
Special Ed Level 1: (6-12)	n/a			12	0
Special Ed Level 2: (PK-12)	0			12	0
Special Ed Level 3: (PK-12)	1			8	0
Special Education Classroom	n/a			6	6
Technical Education/ Voc Ag	n/a			20	0
Physical Education	n/a			50	0
Science Classroom/Lab	n/a			25	0
Business Education	n/a			25	0
Family Liv/Cons Economics	n/a			25	0
Totals	13	0	0		272

School Building Authority of West Virginia  
SBA Form 134 Data Collection Form  
School Improvement Cost Summary Sheet

LEA ID:	039276	Assessment Date:	10/14/19
County:	Kanawha	Total Gross Square Feet:	22213
Facility Name:	George C. Weimer Elementary School	Original Year of Construction:	1951
Design Capacity Enrollment:	272		

Please note, the current-year costs shown below are intended to provide a Rough Order of Magnitude (ROM) estimate of costs. While they are appropriate for high-level capital forecasting, they should not be relied upon for determining specific project funding values. Actual project costs will likely deviate from the presented values due to a variety of factors including, but not limited to, hard and soft cost fluctuations and the actual date of construction for the intended project. Therefore, detailed cost estimates are recommended to validate funding requirements prior to obligating funds for facility replacement or renovation.

Improvement Item

1. Site Work

	Unit	Quantity	Unit Cost	Item Cost	Remarks
Land Acquisition	Acres			\$ -	
Excavation/Grade	CUB FT			\$ -	
Drainage	LIN FT			\$ -	
Walks (6 ft wide)	SQ FT			\$ -	
Parking	SQ FT			\$ -	
Bus Loading	SQ FT			\$ -	
Roads	SQ FT			\$ -	
Playing Fields	SQ FT			\$ -	
Other (Describe in 'Remarks')				\$ -	
Other (Describe in 'Remarks')				\$ -	
Other (Describe in 'Remarks')				\$ -	

Sub-Total

\$ -

2. Renovations, Exterior

	Unit	Quantity	Unit Cost	Item Cost	Remarks
Wall Structure	SQ FT			\$ -	
Floor Structure	SQ FT			\$ -	
Roof Structure	SQ FT			\$ -	
Wall Facing	SQ FT			\$ -	
Windows	EACH			\$ -	
Doors/Frames	EACH			\$ -	
Roofing	SQ FT	22,213	\$ 20.00	\$ 444,260.00	
Coping/Parapet	LIN FT			\$ -	
Painting	SQ FT			\$ -	
Other (Describe in 'Remarks')				\$ -	
Other (Describe in 'Remarks')				\$ -	
Other (Describe in 'Remarks')				\$ -	

Sub-Total

\$ 444,260.00

3. Renovations, Interior

	Unit	Quantity	Unit Cost	Item Cost	Remarks
Floor Covering	SQ FT			\$ -	
Patch & Painting	SQ FT			\$ -	
Ceiling Finish	SQ FT			\$ -	
Plumbing	SQ FT			\$ -	
Heating/Ventilating	SQ FT	22,213	\$ 40.00	\$ 888,520.00	
Air Conditioning	SQ FT			\$ -	
Lighting	SQ FT			\$ -	
Wiring	SQ FT	22,213	\$ 7.00	\$ 155,491.00	
Fire Alarm	SQ FT			\$ -	
Communication System	SQ FT			\$ -	
Technology				\$ -	
Interior Doors	EACH			\$ -	
Other (Describe in 'Remarks')				\$ -	
Other (Describe in 'Remarks')				\$ -	
Other (Describe in 'Remarks')				\$ -	

Sub-Total

\$ 1,044,011.00

4. Building Additions Including Furniture, Furnishings & Equipment

	Unit	Quantity	Unit Cost	Item Cost	Remarks
Administration (ES, MS, HS)	SQ FT			\$ -	
Student Services (ES, MS, HS)	SQ FT			\$ -	

Kindergarten (ES)	SQ FT			\$ -	
Primary (ES)	SQ FT			\$ -	
Media Center (ES)	SQ FT			\$ -	
Basic (MS, HS)	SQ FT			\$ -	
Reading (MS, HS)	SQ FT			\$ -	
Health Education (MS, HS)	SQ FT			\$ -	
Computer Lab (ES, MS, HS)	SQ FT			\$ -	
Inst. Mat. Center (MS, HS)	SQ FT			\$ -	
Home Economics (MS, HS)	SQ FT			\$ -	
Art (ES, MS, HS)	SQ FT			\$ -	
Ind. Technology (MS, HS)	SQ FT			\$ -	
Music (ES, MS, HS)	SQ FT			\$ -	
Physical Education (MS, HS)	SQ FT			\$ -	
Auditorium (MS, HS)	SQ FT			\$ -	
Special Education (ES, MS, HS)	SQ FT			\$ -	
Multi-Purpose (ES)	SQ FT			\$ -	
Kitchen (ES, MS, HS)	SQ FT			\$ -	
Dining (MS, HS)	SQ FT			\$ -	
Business Education (MS)	SQ FT			\$ -	
Co-Op Education (MS)	SQ FT			\$ -	
Drivers Education (MS)	SQ FT			\$ -	
Staff/Faculty (ES, MS, HS)	SQ FT			\$ -	
Toilets/Fixtures (ES, MS, HS)	SQ FT			\$ -	
Storage General (ES, MS, HS)	SQ FT			\$ -	
Storage Instructional (ES, MS, HS)	SQ FT			\$ -	
Custodial (ES, MS, HS)	SQ FT			\$ -	
Mechanical (MS, HS)	SQ FT			\$ -	
Other (Describe in 'Remarks')	SQ FT	750	\$ 307.00	\$ 230,250.00	SAFE SCHOOL ENTRANCE
Other (Describe in 'Remarks')				\$ -	
Other (Describe in 'Remarks')				\$ -	
Subtotal of Building Additions (SQ FT)		750			
Circulation	30%	225	\$ 307.00	\$ 69,075.00	
<b>Sub-Total</b>				<b>\$ 299,325.00</b>	

<b>5. Special Construction</b>	<b>Unit</b>	<b>Quantity</b>	<b>Unit Cost</b>	<b>Item Cost</b>	<b>Remarks</b>
Elevator	EACH			\$ -	
Sprinkler Systems	SQ FT	22,213	\$ 7.00	\$ 155,491.00	
Kitchen Equipment	ALL			\$ -	
Waste Treatment	EACH			\$ -	
Other (Describe in 'Remarks')				\$ -	
Other (Describe in 'Remarks')				\$ -	
Other (Describe in 'Remarks')				\$ -	
<b>Sub-Total</b>				<b>\$ 155,491.00</b>	

<b>6. Other Special Costs</b>	<b>Quantity</b>	<b>Unit Cost</b>	<b>Item Cost</b>	<b>Remarks</b>
			\$ -	
			\$ -	
			\$ -	
<b>Sub-Total</b>			<b>\$ -</b>	
<b>Sub-Total of Items 1 through 6</b>			<b>\$ 1,943,087.00</b>	

<b>7. Architectural/Engineering Fees</b>	<b>%</b>	<b>Quantity</b>	<b>Item Cost</b>	<b>Remarks</b>
New Construction			\$ -	
Renovations	7.0%	\$1,943,087.00	\$ 136,016.09	
<b>Sub-Total</b>			<b>\$ 136,016.09</b>	

<b>8. Miscellaneous</b>	<b>Unit</b>	<b>Quantity</b>	<b>Unit Cost</b>	<b>Item Cost</b>	<b>Remarks</b>
Survey	EACH			\$ -	
Soil Inv.	EACH			\$ -	
Other (Describe in 'Remarks')				\$ -	
Other (Describe in 'Remarks')				\$ -	
Other (Describe in 'Remarks')				\$ -	
<b>Sub-Total</b>				<b>\$ -</b>	

<b>9. Contingencies</b>	<b>%</b>	<b>Quantity</b>	<b>Item Cost</b>	<b>Remarks</b>
New Construction			\$ -	



Renovations	6.0%	\$1,943,087.00	\$ 116,585.22	
Sub-Total			\$ 116,585.22	

Grand Total Project Cost	\$ 2,195,688.31
--------------------------	-----------------

**Worksheet Links:**

[Campus Information](#)

[Building 1](#)

[Building 2](#)

[Building 3](#)

[Building 4](#)

Reference Data from Prior Sheets (for WVDE Use Only):	
Energy Utilization Index:	110,895
Current Enrollment:	179
Program Capacity:	272
Utilization Calculation:	66%
Building(s) in Floodplain/Floodway:	0

Reasons and Supporting Data for a Proposed School Closure | Page 83

School Building Authority of West Virginia  
SBA Form 134 Data Collection Form  
Building Information Sheet

Building Gross Square Feet	Main Building	1992	# Floors (incl. Bmt)	1
	Basement	N		
	28,962	Y/N		

System	Material	Count	Condition	Notes
Conveying Systems			Not Present	
Electrical - Branch Wiring			3 - Average	The majority of wiring is 50 years old
Electrical - Lighting	Fluorescent		3 - Average	
Electrical - Emergency Lighting and Exit Signs			3 - Average	
Electrical - Service and Distribution			3 - Average	1200 A, 208/120 V 3 phase
Equipment & Furnishings - Institutional Equipment	Includes Commercial Metal		3 - Average	
Exterior Enclosure - Exterior Doors	Masonry		3 - Average	
Exterior Enclosure - Exterior Wall Finishes	Single Pane, Hard, All Frame Types		2 - Below Average	
Exterior Enclosure - Exterior Windows			2 - Below Average	Fire Alarm Control Panels is Notifier AFP400, very old.
Fire Protection - Fire Alarm & Detection			2 - Below Average	4" service, see Overview for details. Fire Department Connection has only a single hose hookup.
Fire Protection - Sprinklers and Standpipes			2 - Below Average	
HVAC - Terminal & Package Units			Not Present	See Overview for details.
HVAC - Distribution System			2 - Below Average	1962/1967 Building has 50+ years old HW piping, Unit Ventilators in Classrooms, HW connectors in Offices, and 2 pumps.
HVAC - Heat Generating Systems			3 - Average	2 Forced Draft 600 mbh Input Boilers (2012)
HVAC - Cooling Generating Systems			Not Present	
HVAC - Controls and Instrumentation			2 - Below Average	Pneumatic and DDC
Interior Construction - Interior Doors	Solid Core Wood		3 - Average	
Interior Construction - Specities and Casework			3 - Average	
Interior Finishes - Ceiling Finishes	Exposed		3 - Average	Exposed ceiling in rectum dining
Interior Finishes - Floor Finishes	Vinyl Composition Tile		3 - Average	
Interior Finishes - Grout Mason Floor Finishes			3 - Average	Multipurpose room flooring is VCT
Interior Finishes - Wall Finishes	Painted CMU		3 - Average	
Plumbing - Domestic Water Distribution			3 - Average	
Plumbing - Fixtures	Manual		3 - Average	
Plumbing - Rain Water Drainage			3 - Average	
Plumbing - Sanitary Sewer			3 - Average	
Roofing - Roof Coverings	Membrane		3 - Average	No roof access, so limited viewing of roof. There are multiple roof leaks throughout the school. Some just happening in the last couple of weeks.
Security System			3 - Average	
Technology Infrastructure			3 - Average	

Year installed if different from Building

29 of 29 systems have been evaluated



School Building Authority of West Virginia  
SBA Form 134 Data Collection Form  
Facility General Information Sheet

1 - Facility General Information Worksheet

<b>LEA ID:</b>	039201	<b>Assessment Date:</b>	10/14/19
<b>County:</b>	Kanawha	<b>Total Gross Square Feet:</b>	28,962
<b>Facility Name:</b>	Alban Elementary School	<b>Original Year of Construction:</b>	1962

**Energy Indexes**

(List the total amount of each fuel source used for one year)

Source (Units)	Consumption per Year	Conversion (BTU/Unit)	Total BTU
Electric (Kilowatt-Hrs)	395,680	3,412	1,350,115,555
Natural Gas (MCF) --OR--	775	1,037,000	803,675,000
Natural Gas (Decotherms)		1,000,000	-
Coal (Tons)		24,000,000	-
#2 Fuel Oil (Gallons)		138,874	-
Propane (Pounds)		21,600	-
Used Oil (Gallons)		125,000	-
Wood Chips (Tons)		16,500,000	-
Other (specify)			-
Amount:			
Units:			

**Worksheet Links:**

Total BTU: 2,153,790,555  
Energy Utilization Index (EUI): 74,366

School Building Authority of West Virginia  
SBA Form 134 Data Collection Form  
Site Evaluation Sheet

LEA ID:	039201	Assessment Date:	10/14/19
County:	Kanawha	Total Gross Square Feet:	28,962
Facility Name:	Alban Elementary School	Original Year of Construction:	1962

2 - Site Evaluation Worksheet

Site

City or Rural:	City
Actual Acres:	3.04
Useable Acres:	3.04
Site adequate for expansion:	No
Are public parks/areas adjacent:	No
% site out of flood plain:	100%
% site in flood plain:	0%

Site Remarks:

Overall Site Condition:

3-Average

Drainage

Drainage Remarks:

Overall Drainage Condition:

Street sometimes floods causing access issues

3-Average

Parking

Parking Adequately Lit:

Adequacy of Parking:

No

2-Below Average

Parking Remarks:

Overall Parking Condition:

2-Below Average

Bus Loading

Bus Loading Adequate:

Bus Loading Remarks:

Overall Bus loading Condition:

No

Uses street to load and unload buses

2-Below Average

Access Roads

Adequacy of On-Site Access Roads:

Adequacy of Off-Site Access Roads:

2-Below Average

3-Average

Access Roads Remarks:

Overall Access Road Condition:

3-Average

**Playfields/Playcourts**

Adequacy of Playfields:

3-Average

Adequacy of Playcourts:

3-Average

Playfields/Playcourts Remarks:

Overall Playfield/Playcourts Condition:

3-Average

**Site Utilities**

**Electrical Services:**

Phase:

3

Voltage:

208/120

Amps:

1200

Electric Utility Company:

AEP

Main Service Feed into Building:

Overhead

Electrical Service Remarks:

Overall Electrical Service Condition:

3-Average

**Fuel Sources:**

Natural Gas:

Yes

Coal:

Fuel Oils:

Propane:

Other (Specify):

Fuel Line Size (inches):

3"

Fuel Utility Company:

Mountaineer Gas

Fuel Sources Remarks:

Overall Fuel Sources Condition:

3-Average

**Water Sources:**

Public:

Yes

Well:

Water Line Size (inches):

2"

Water Utility Company:

St Albans

Water Sources Remarks:

Overall Water Sources Condition:

3-Average



**Sewage Systems:**

Public:

Yes

Septic:

Other (Specify):

Public Service District (PSD):

St Albans

Sewage System Remarks:

Overall Sewage System Condition:

3-Average

School Building Authority of West Virginia  
SBA Form 134 Data Collection Form  
Building Component Evaluation Sheet

LEA ID:	039201	Assessment Date:	10/14/19
County:	Kanawha	Total Gross Square Feet:	28,962
Facility Name:	Alban Elementary School	Original Year of Construction:	1962

3 - Building Component Evaluation Worksheet

Building Structures:

Type:

Load Bearing Masonry

Building Structures Remarks:

Overall Building Structure Condition:

3-Average

Floor Structures:

Steel Joist/Concrete (floor area SF):

Wood Joists (floor area SF):

Slab on Grade (floor area SF):

Other (specify) / Floor area SF:

28,962

Floor Structure Remarks:

Overall Floor Structure Condition:

3-Average

Roof:

Roof Structure:

Steel Joists

Roof Structures Remarks:

Overall Roof Condition:

3-Average

Building Systems:

The systems below are addressed in the FCA data collection tool.

Roof Coverings

Wall Finishes

Ceiling Finishes

Floor Finishes

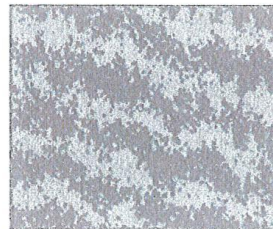
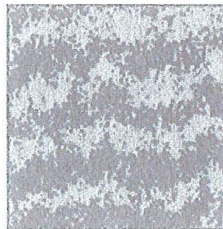
Doors

Windows

HVAC

Electrical

Fire Alarm



Technology Infrastructure:

Sufficient Electrical Capacity:

Yes

3-Average

Power Receptacles Availability:

Yes

3-Average

ID Network Type (if available):  
Inventory Records Hardware  
Other (specify):

Yes	3-Average
Yes	4-Above Average

Deficiencies:

Technology Remarks:

Overall Technology Infrastructure Condition:

3-Average

**Technology Assessment:**

Teacher Training:

4-Above Average

Software Use:

4-Above Average

Purchasing Practices:

4-Above Average

Network Administration:

4-Above Average

Inventory Records

4-Above Average

Other (specify):

Deficiencies:

Technology Remarks:

Overall Technology Condition:

4-Above Average

**School Access Safety Audit:**

Planning:

Deterrence:

Detection:

Delay:

Communication:

Evacuation:

Safety Remarks:

Overall Access Safety Condition:



School Building Authority of West Virginia  
SBA Form 134 Data Collection Form  
Facility Spaces Evaluation / Utilization Analysis Sheet

LEA ID:	039201	Assessment Date:	4/3/2022
County:	Kanawha	Total Gross Square Feet:	28,962
Facility Name:	Alban Elementary School	Original Year of Construction:	1962

Classroom Type	Grade Config		Age of Facility	No. of Renovations	Square Ft	Portables	Location (City, St)	Utilization Calculation
	PK - 5	5						
Lowest Grade Level:	PK	5	58		28,962	1	St. Albans, WV	
Highest Grade Level:								

Complete ONLY the column below associated with the highest grade level for this school.

Classroom Type	Number of Class Types		Number of Class Types (HS)	X	Max Students Per Room	=	Total Program Capacity	Utilization Calculation
	(ES)	(MS)						
Pre-Kindergarten (Full Day)	3				20		60	Current Enrollment 311
Kindergarten (Full Day)	16				20		320	
General Purpose Classroom	n/a				25		400	
Computer Lab	n/a				25		0	
Art Lab	n/a				25		0	
Music Classroom	n/a				25		0	
Special Ed Pull-out	n/a		n/a		0		0	
Special Ed Level 1: (PK-5)	0				6		0	
Special Ed Level 1: (6-12)	n/a				12		0	
Special Ed Level 2: (PK-12)	0				12		0	
Special Ed Level 3: (PK-12)	0				8		0	
Special Education Classroom	1				6		6	Utilization Calculation 67%
Technical Education/Voc Ag	n/a				20		0	
Physical Education	n/a				50		0	
Science Classroom/Lab	n/a				25		0	Desirable Utilization 85%
Business Education	n/a				25		0	
Family Liv/Cons Economics	n/a				25		0	
Totals	20	0	0				466	Difference -18%

School Building Authority of West Virginia  
SBA Form 134 Data Collection Form  
School Improvement Cost Summary Sheet

LEA ID:	039201	Assessment Date:	10/14/19
County:	Kanawha	Total Gross Square Feet:	28962
Facility Name:	Alban Elementary School	Original Year of Construction:	1962
Design Capacity Enrollment:	466		

Please note, the current-year costs shown below are intended to provide a Rough Order of Magnitude (ROM) estimate of costs. While they are appropriate for high-level capital forecasting, they should not be relied upon for determining specific project funding values. Actual project costs will likely deviate from the presented values due to a variety of factors including, but not limited to, hard and soft cost fluctuations and the actual date of construction for the intended project. Therefore, detailed cost estimates are recommended to validate funding requirements prior to obligating funds for facility replacement or renovation.

Improvement Item	Unit	Quantity	Unit Cost	Item Cost	Remarks
<b>1. Site Work</b>					
Land Acquisition	Acres			\$ -	
Excavation/Grade	CUB FT			\$ -	
Drainage	LIN FT			\$ -	
Walks (6 ft wide)	SQ FT			\$ -	
Parking	SQ FT			\$ -	
Bus Loading	SQ FT			\$ -	
Roads	SQ FT			\$ -	
Playing Fields	SQ FT			\$ -	
Other (Describe in 'Remarks')				\$ -	
Other (Describe in 'Remarks')				\$ -	
Other (Describe in 'Remarks')				\$ -	
<b>Sub-Total</b>				\$ -	

Improvement Item	Unit	Quantity	Unit Cost	Item Cost	Remarks
<b>2. Renovations, Exterior</b>					
Wall Structure	SQ FT			\$ -	
Floor Structure	SQ FT			\$ -	
Roof Structure	SQ FT			\$ -	
Wall Facing	SQ FT			\$ -	
Windows	EACH			\$ -	
Doors/Frames	EACH			\$ -	
Roofing	SQ FT			\$ -	
Coping/Parapet	LIN FT			\$ -	
Painting	SQ FT			\$ -	
Other (Describe in 'Remarks')				\$ -	
Other (Describe in 'Remarks')				\$ -	
Other (Describe in 'Remarks')				\$ -	
<b>Sub-Total</b>				\$ -	

Improvement Item	Unit	Quantity	Unit Cost	Item Cost	Remarks
<b>3. Renovations, Interior</b>					
Floor Covering	SQ FT			\$ -	
Patch & Painting	SQ FT			\$ -	
Ceiling Finish	SQ FT			\$ -	
Plumbing	SQ FT			\$ -	
Heating/Ventilating	SQ FT	28,962	\$ 40.00	\$ 1,158,480.00	
Air Conditioning	SQ FT			\$ -	
Lighting	SQ FT			\$ -	
Wiring	SQ FT			\$ -	
Fire Alarm	SQ FT	28,962	\$ 5.00	\$ 144,810.00	
Communication System	SQ FT			\$ -	
Technology				\$ -	
Interior Doors	EACH			\$ -	
Other (Describe in 'Remarks')	SQ FT	28,962	\$ 7.00	\$ 202,734.00	CONTROLS
Other (Describe in 'Remarks')				\$ -	
Other (Describe in 'Remarks')				\$ -	
<b>Sub-Total</b>				\$ 1,506,024.00	

Improvement Item	Unit	Quantity	Unit Cost	Item Cost	Remarks
<b>4. Building Additions Including Furniture, Furnishings &amp; Equipment</b>					
Administration (ES, MS, HS)	SQ FT			\$ -	
Student Services (ES, MS, HS)	SQ FT			\$ -	

Kindergarten (ES)	SQ FT			\$ -	
Primary (ES)	SQ FT			\$ -	
Media Center (ES)	SQ FT			\$ -	
Basic (MS, HS)	SQ FT			\$ -	
Reading (MS, HS)	SQ FT			\$ -	
Health Education (MS, HS)	SQ FT			\$ -	
Computer Lab (ES, MS, HS)	SQ FT			\$ -	
Inst. Mat. Center (MS, HS)	SQ FT			\$ -	
Home Economics (MS, HS)	SQ FT			\$ -	
Art (ES, MS, HS)	SQ FT			\$ -	
Ind. Technology (MS, HS)	SQ FT			\$ -	
Music (ES, MS, HS)	SQ FT			\$ -	
Physical Education (MS, HS)	SQ FT			\$ -	
Auditorium (MS, HS)	SQ FT			\$ -	
Special Education (ES, MS, HS)	SQ FT			\$ -	
Multi-Purpose (ES)	SQ FT			\$ -	
Kitchen (ES, MS, HS)	SQ FT			\$ -	
Dining (MS, HS)	SQ FT			\$ -	
Business Education (MS)	SQ FT			\$ -	
Co-Op Education (MS)	SQ FT			\$ -	
Drivers Education (MS)	SQ FT			\$ -	
Staff/Faculty (ES, MS, HS)	SQ FT			\$ -	
Toilets/Fixtures (ES, MS, HS)	SQ FT			\$ -	
Storage General (ES, MS, HS)	SQ FT			\$ -	
Storage Instructional (ES, MS, HS)	SQ FT			\$ -	
Custodial (ES, MS, HS)	SQ FT			\$ -	
Mechanical (MS, HS)	SQ FT			\$ -	
Other (Describe in 'Remarks')	SQ FT	750	\$ 307.00	\$ 230,250.00	SAFE SCHOOL ENTRANCE
Other (Describe in 'Remarks')				\$ -	
Other (Describe in 'Remarks')				\$ -	
Subtotal of Building Additions (SQ FT)		750			
Circulation	30%	225	\$ 307.00	\$ 69,075.00	
Sub-Total				\$ 299,325.00	

5. Special Construction	Unit	Quantity	Unit Cost	Item Cost	Remarks
Elevator	EACH			\$ -	
Sprinkler Systems	SQ FT			\$ -	
Kitchen Equipment	ALL			\$ -	
Waste Treatment	EACH			\$ -	
Other (Describe in 'Remarks')				\$ -	
Other (Describe in 'Remarks')				\$ -	
Other (Describe in 'Remarks')				\$ -	
Sub-Total				\$ -	

6. Other Special Costs	Quantity	Unit Cost	Item Cost	Remarks
			\$ -	
			\$ -	
			\$ -	

Sub-Total \$ -

Sub-Total of Items 1 through 6 \$ 1,805,349.00

7. Architectural/Engineering Fees	%	Quantity	Item Cost	Remarks
New Construction			\$ -	
Renovations	7.0%	\$1,805,349.00	\$ 126,374.43	
Sub-Total			\$ 126,374.43	

8. Miscellaneous	Unit	Quantity	Unit Cost	Item Cost	Remarks
Survey	EACH			\$ -	
Soil Inv.	EACH			\$ -	
Other (Describe in 'Remarks')				\$ -	
Other (Describe in 'Remarks')				\$ -	
Other (Describe in 'Remarks')				\$ -	
Sub-Total				\$ -	

9. Contingencies	%	Quantity	Item Cost	Remarks
New Construction			\$ -	





Renovations	6.0%	\$1,805,349.00	\$ 108,320.94	
Sub-Total			\$ 108,320.94	

Grand Total Project Cost	\$ 2,040,044.37
--------------------------	-----------------

**Worksheet Links:**

[Campus Information](#)  
[Building 1](#)  
[Building 2](#)  
[Building 3](#)  
[Building 4](#)  
[Building 5](#)

**Reference Data from Prior Sheets (for WVDE Use Only):**

Energy Utilization Index:	74,366
Current Enrollment:	311
Program Capacity:	466
Utilization Calculation:	67%
Building(s) in Floodplain/Floodway:	0



School Building Authority of West Virginia  
 500 Capitol Building, Charleston, WV 25301  
 Current Information Sheet

Full All Item Name  
 Predominant Assessment  
 Campus Name  
 County Name  
 School Code

Original Construction Yr.  
 Current Construction Yr.  
 Current Facility



Parameters									
System	Material	Year Installed from Building	Condition	SF	Notes	Message			
1. Air Conditioning System	Concrete	1977	Good	1,277					
2. Heating System	Boiler	1977	Good	1,277					

Permanent Buildings									
Building Name	Predominant Building Type	Year Built	Located in Program	Assessment	Year Built	Assessment	GF	# Floors (incl. level)	Evaluation Status
1. Main Building	Classroom	1953	No	Y	1953	N	62,442	2	79 of 23 systems have been evaluated
2									
3									
4									
5									
6									
7									
8									
9									
10									
Total GF							62,442		

Permanent Buildings									
Building Name	Predominant Building Type	Year Built	Located in Program	Assessment	Year Built	Assessment	GF	# Floors (incl. level)	Evaluation Status
1									
2									
3									
4									
5									
6									
7									
8									
9									
10									
Total GF									

Overview of Findings	
There is no safe school entry at this location.	
There is no sprinkler system at this school.	
California is not a California school in this state.	
There are no current findings at this school.	
There are no current findings at this school.	
There are no current findings at this school.	
There are no current findings at this school.	
There are no current findings at this school.	
There are no current findings at this school.	
There are no current findings at this school.	
There are no current findings at this school.	
There are no current findings at this school.	
There are no current findings at this school.	
There are no current findings at this school.	
There are no current findings at this school.	
There are no current findings at this school.	
There are no current findings at this school.	
There are no current findings at this school.	
There are no current findings at this school.	
There are no current findings at this school.	
There are no current findings at this school.	
There are no current findings at this school.	
There are no current findings at this school.	
There are no current findings at this school.	
There are no current findings at this school.	
There are no current findings at this school.	
There are no current findings at this school.	
There are no current findings at this school.	
There are no current findings at this school.	
There are no current findings at this school.	
There are no current findings at this school.	
There are no current findings at this school.	
There are no current findings at this school.	
There are no current findings at this school.	
There are no current findings at this school.	
There are no current findings at this school.	
There are no current findings at this school.	
There are no current findings at this school.	
There are no current findings at this school.	
There are no current findings at this school.	
There are no current findings at this school.	
There are no current findings at this school.	
There are no current findings at this school.	
There are no current findings at this school.	
There are no current findings at this school.	
There are no current findings at this school.	
There are no current findings at this school.	
There are no current findings at this school.	
There are no current findings at this school.	
There are no current findings at this school.	
There are no current findings at this school.	
There are no current findings at this school.	
There are no current findings at this school.	
There are no current findings at this school.	
There are no current findings at this school.	
There are no current findings at this school.	
There are no current findings at this school.	
There are no current findings at this school.	
There are no current findings at this school.	
There are no current findings at this school.	
There are no current findings at this school.	
There are no current findings at this school.	
There are no current findings at this school.	
There are no current findings at this school.	
There are no current findings at this school.	
There are no current findings at this school.	
There are no current findings at this school.	
There are no current findings at this school.	
There are no current findings at this school.	
There are no current findings at this school.	
There are no current findings at this school.	
There are no current findings at this school.	
There are no current findings at this school.	
There are no current findings at this school.	
There are no current findings at this school.	
There are no current findings at this school.	
There are no current findings at this school.	
There are no current findings at this school.	
There are no current findings at this school.	
There are no current findings at this school.	
There are no current findings at this school.	
There are no current findings at this school.	
There are no current findings at this school.	
There are no current findings at this school.	
There are no current findings at this school.	
There are no current findings at this school.	
There are no current findings at this school.	
There are no current findings at this school.	
There are no current findings at this school.	
There are no current findings at this school.	
There are no current findings at this school.	
There are no current findings at this school.	
There are no current findings at this school.	
There are no current findings at this school.	
There are no current findings at this school.	
There are no current findings at this school.	
There are no current findings at this school.	
There are no current findings at this school.	
There are no current findings at this school.	
There are no current findings at this school.	
There are no current findings at this school.	
There are no current findings at this school.	
There are no current findings at this school.	
There are no current findings at this school.	
There are no current findings at this school.	
There are no current findings at this school.	
There are no current findings at this school.	
There are no current findings at this school.	
There are no current findings at this school.	
There are no current findings at this school.	
There are no current findings at this school.	
There are no current findings at this school.	
There are no current findings at this school.	
There are no current findings at this school.	
There are no current findings at this school.	
There are no current findings at this school.	
There are no current findings at this school.	
There are no current findings at this school.	
There are no current findings at this school.	
There are no current findings at this school.	
There are no current findings at this school.	
There are no current findings at this school.	
There are no current findings at this school.	
There are no current findings at this school.	
There are no current findings at this school.	
There are no current findings at this school.	
There are no current findings at this school.	
There are no current findings at this school.	
There are no current findings at this school.	
There are no current findings at this school.	
There are no current findings at this school.	
There are no current findings at this school.	
There are no current findings at this school.	
There are no current findings at this school.	
There are no current findings at this school.	
There are no current findings at this school.	
There are no current findings at this school.	
There are no current findings at this school.	
There are no current findings at this school.	
There are no current findings at this school.	
There are no current findings at this school.	
There are no current findings at this school.	
There are no current findings at this school.	
There are no current findings at this school.	
There are no current findings at this school.	
There are no current findings at this school.	
There are no current findings at this school.	
There are no current findings at this school.	
There are no current findings at this school.	
There are no current findings at this school.	
There are no current findings at this school.	
There are no current findings at this school.	
There are no current findings at this school.	
There are no current findings at this school.	
There are no current findings at this school.	
There are no current findings at this school.	
There are no current findings at this school.	
There are no current findings at this school.	
There are no current findings at this school.	
There are no current findings at this school.	
There are no current findings at this school.	
There are no current findings at this school.	
There are no current findings at this school.	
There are no current findings at this school.	
There are no current findings at this school.	
There are no current findings at this school.	
There are no current findings at this school.	
There are no current findings at this school.	
There are no current findings at this school.	
There are no current findings at this school.	
There are no current findings at this school.	
There are no current findings at this school.	
There are no current findings at this school.	
There are no current findings at this school.	
There are no current findings at this school.	
There are no current findings at	

School Building Authority of West Virginia  
SBA Form 134 Data Collection Form  
Building Information Sheet

Building Gross Square Feet	Main Building	Basement (1774)	1953	14 floors (Total 15)	2
	64,642	N			

System	Material	Count	Condition	Notes
Conveying Systems	Heaviest (3) Steps	3	1 - Average 2 - Good	28 of 29 systems have been evaluated
Electrical - Branch Wiring				GFCI receptacles past end of life. Surface mount receptacles in classroom.
Electrical - Lighting	Fluorescents		1 - inadequate	No auto-off devices installed. High Pressure Sodium on exterior. T12 tubes in office area. Yellowing lenses on exterior. Exterior fixture on during daylight.
Electrical - Emergency Lighting and Exit Signs				Insufficient egress lighting in corridors, cafeteria, and exterior. Exit signs without battery backup (no emergency power). Exit signs too small for current code. Exit signs past end of life. Wall packs past end of life. Wall packs not illuminating on test. Wall packs too high to test. Exit signs damaged.
Electrical - Service and Distribution				Main switchgear over 40 years old. Panels over 40 years old. Unloadable panels in student area. Conductor making loud humming. No capacity for expansion.
Equipment & Furnishings - Institutional Equipment	Includes Commercial		2 - Below Average	
Exterior Enclosure - Exterior Doors	Metal		1 - Average	
Exterior Enclosure - Exterior Wall Finishes	Masonry		3 - Average	
Exterior Enclosure - Exterior Windows	Single Pane, Fixed, All Frame Types		2 - Below Average	
Fire Protection - Fire Alarm & Detection			2 - Below Average	FACP showing trouble with battery charger. MC cable for cabling damaged. Test based on administration.
Fire Protection - Sprinklers and Standpipes			Not Present	
HVAC - Terminal & Package Units			Not Present	Window Type AC unit no mechanical ventilation.
HVAC - Distribution System			3 - Average	
HVAC - Heat Generating Systems			1 - Average	4 Steam boilers providing heat to steam convectors.
HVAC - Cooling Generating Systems			Not Present	
HVAC - Controls and Instrumentation			2 - Below Average	Pneumatic controls compressor has a leak and no able to maintain air pressure.
Interior Construction - Interior Doors	Solid Core Wood		3 - Average	
Interior Construction - Specialties and Casework			2 - Below Average	
Interior Finishes - Ceiling Finishes	Plaster		3 - Average	
Interior Finishes - Floor Finishes	Plastic Composition Tile		3 - Average	There are some areas of the upstairs corridor that have corner cracking. Upstairs classrooms have 9"x9" tile (rating 2).
Interior Finishes - Wall Finishes	Painted CMU		3 - Average	Gym walls have some cracking.
Plumbing - Domestic Water Distribution			3 - Average	
Plumbing - Fixtures	Automatic		3 - Average	
Plumbing - Rain Water Drainage			1 - Average	
Plumbing - Sanitary Sewer			3 - Average	
Roofing - Roof Coverings	Membrane		3 - Average	Gymnasium and additions are still mobile and are having leaks (rating 2).
Security System			4 - Below Average	Server in maintenance closet room. Exposed cabling in mechanical rooms. Surface mount technology infrastructure.
Technology Infrastructure			2 - Below Average	



School Building Authority of West Virginia  
SBA Form 134 Data Collection Form  
Facility General Information Sheet

1 - Facility General Information Worksheet

LEA ID:	039280	Assessment Date:	10/21/19
County:	Kanawha	Total Gross Square Feet:	64,642
Facility Name:	Bridgeview Elementary School	Original Year of Construction:	1953

Energy Indexes

(List the total amount of each fuel source used for one year)

Source (Units)	Consumption per Year	Conversion (BTU/Unit)	Total BTU
Electric (Kilowatt-Hrs)	558,000	3,412	1,903,974,120
Natural Gas (MCF) --OR--	3,557	1,037,000	3,688,609,000
Natural Gas (Decotherms)		1,000,000	-
Coal (Tons)		24,000,000	-
#2 Fuel Oil (Gallons)		138,874	-
Propane (Pounds)		21,600	-
Used Oil (Gallons)		125,000	-
Wood Chips (Tons)		16,500,000	-
Other (specify)			-
Amount:			
Units:			

Worksheet Links:

Total BTU: 5,592,583,120  
Energy Utilization Index (EUI): 86,516

School Building Authority of West Virginia  
SBA Form 134 Data Collection Form  
Site Evaluation Sheet

LEA ID:	039280	Assessment Date:	10/21/19
County:	Kanawha	Total Gross Square Feet:	64,642
Facility Name:	Bridgeview Elementary School	Original Year of Construction:	1953

2 - Site Evaluation Worksheet

Site

City or Rural:	City
Actual Acres:	2.3312
Useable Acres:	1.9
Site adequate for expansion:	No
Are public parks/areas adjacent:	No
% site out of flood plain:	83%
% site in flood plain:	17%

Site Remarks:

Overall Site Condition:

2-Below Average

Drainage

Drainage Remarks:

Overall Drainage Condition:

3-Average

Parking

Parking Adequately Lit:

Adequacy of Parking:

No

2-Below Average

Parking Remarks:

Overall Parking Condition:

City is looking at sharing cost for additional lighting at rear of building where the majority of parking is located.

2-Below Average

Bus Loading

Bus Loading Adequate:

Bus Loading Remarks:

Overall Bus loading Condition:

No

loading is on city streets

2-Below Average

Access Roads

Adequacy of On-Site Access Roads:

Adequacy of Off-Site Access Roads:

2-Below Average

3-Average

Access Roads Remarks:

Overall Access Road Condition:

3-Average

**Playfields/Playcourts**

Adequacy of Playfields:

2-Below Average

Adequacy of Playcourts:

3-Average

Playfields/Playcourts Remarks:

Overall Playfield/Playcourts Condition:

2-Below Average

**Site Utilities**

**Electrical Services:**

Phase:

3

Voltage:

120/208

Amps:

1200

Electric Utility Company:

Appalachian Electric

Main Service Feed into Building:

Underground

Electrical Service Remarks:

Underground service entrance cannot be evaluated

Overall Electrical Service Condition:

3-Average

**Fuel Sources:**

Natural Gas:

Yes

Coal:

Fuel Oils:

Propane:

No

Other (Specify):

Fuel Line Size (inches):

6

Fuel Utility Company:

Mountaineer Gas

Fuel Sources Remarks:

Overall Fuel Sources Condition:

3-Average

**Water Sources:**

Public:

Yes

Well:

Water Line Size (inches):

3

Water Utility Company:

West Virginia American Water

Water Sources Remarks:

Overall Water Sources Condition:

3-Average



**Sewage Systems:**

Public:

Yes

Septic:

Other (Specify):

Public Service District (PSD):

South Charleston Municipal

Sewage System Remarks:

Overall Sewage System Condition:

3-Average

School Building Authority of West Virginia  
SBA Form 134 Data Collection Form  
Building Component Evaluation Sheet

LEA ID:	039280	Assessment Date:	10/21/19
County:	Kanawha	Total Gross Square Feet:	64,642
Facility Name:	Bridgeview Elementary School	Original Year of Construction:	1953

3 - Building Component Evaluation Worksheet

Building Structures:

Type:

Load Bearing Masonry

Building Structures Remarks:

There are some cracks present at the gymnasium that have been caulked and painted over where the block have shifted out of the plane of the wall.

Overall Building Structure Condition:

3-Average

Floor Structures:

Steel Joist/Concrete (floor area SF):

18,800

Wood Joists (floor area SF):

Slab on Grade (floor area SF):

45,842

Other (specify) / Floor area SF:

Floor Structure Remarks:

Overall Floor Structure Condition:

3-Average

Roof:

Roof Structure:

Steel Joists

Roof Structures Remarks:

Overall Roof Condition:

3-Average

Building Systems:

The systems below are addressed in the FCA data collection tool.

Roof Coverings

Wall Finishes

Ceiling Finishes

Floor Finishes

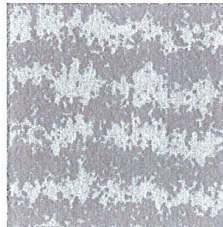
Doors

Windows

HVAC

Electrical

Fire Alarm



Technology Infrastructure:

Sufficient Electrical Capacity:

Yes

2-Below Average

Power Receptacles Availability:

Yes

2-Below Average



ID Network Type (if available):  
Inventory Records Hardware  
Other (specify):

	4-Above Average
	4-Above Average

Deficiencies:

Technology Remarks:

Overall Technology Infrastructure Condition: 2-Below Average

**Technology Assessment:**

Teacher Training:  
Software Use:  
Purchasing Practices:  
Network Administration:  
Inventory Records  
Other (specify):

4-Above Average	
4-Above Average	
4-Above Average	
4-Above Average	
4-Above Average	

Deficiencies:

Technology Remarks:

Overall Technology Condition: 4-Above Average



**School Access Safety Audit:**

Planning:  
Deterrence:  
Detection:  
Delay:  
Communication:  
Evacuation:


Safety Remarks:

Overall Access Safety Condition:





School Building Authority of West Virginia  
SBA Form 134 Data Collection Form  
Facility Spaces Evaluation / Utilization Analysis Sheet

LEA ID:	039280	Assessment Date:	4/3/25
County:	Kanawha	Total Gross Square Feet:	64,642
Facility Name:	Bridgeview Elementary School	Original Year of Construction:	1953

Lowest Grade Level:	PK	Grade Config:	PK - 5	No. of Renovations:	0	Portables:	0	Location (City, St):	South Charleston, WV
Highest Grade Level:	5								

Complete ONLY the column below associated with the highest grade level for this school.

Classroom Type	Number of Class Types		Number of Class Types (HS)	Max Students Per Room	Total Program Capacity	Utilization Calculation
	(ES)	(MS)				
Pre-Kindergarten (Full Day)	1			20	20	Current Enrollment 446
Kindergarten (Full Day)	3			20	60	
General Purpose Classroom	21			25	525	
Computer Lab	n/a			25	0	
Art Lab	n/a			25	0	
Music Classroom	n/a			25	0	
Special Ed Pull-out	n/a	n/a	n/a	0	0	
Special Ed Level 1: (PK-5)	1			6	6	
Special Ed Level 1: (6-12)	n/a			12	0	
Special Ed Level 2: (PK-12)	4			12	48	
Special Ed Level 3: (PK-12)	0			8	0	
Special Education Classroom	0			6	0	
Technical Education/ Voc Ag	n/a			20	0	Utilization Calculation 68%
Physical Education	n/a			50	0	
Science Classroom/Lab	n/a			25	0	Desirable Utilization 85%
Business Education	n/a			25	0	
Family Liv/Cons Economics	n/a			25	0	
Totals	30	0	0		659	Difference -17%

School Building Authority of West Virginia  
SBA Form 134 Data Collection Form  
School Improvement Cost Summary Sheet

LEA ID:	039280	Assessment Date:	10/21/19
County:	Kanawha	Total Gross Square Feet:	64642
Facility Name:	Bridgeview Elementary School	Original Year of Construction:	1953
Design Capacity Enrollment:	659		

Please note, the current-year costs shown below are intended to provide a Rough Order of Magnitude (ROM) estimate of costs. While they are appropriate for high-level capital forecasting, they should not be relied upon for determining specific project funding values. Actual project costs will likely deviate from the presented values due to a variety of factors including, but not limited to, hard and soft cost fluctuations and the actual date of construction for the intended project. Therefore, detailed cost estimates are recommended to validate funding requirements prior to obligating funds for facility replacement or renovation.

Improvement Item

1. Site Work

Improvement Item	Unit	Quantity	Unit Cost	Item Cost	Remarks
Land Acquisition	Acres			\$ -	
Excavation/Grade	CUB FT			\$ -	
Drainage	LIN FT			\$ -	
Walks (6 ft wide)	SQ FT			\$ -	
Parking	SQ FT			\$ -	
Bus Loading	SQ FT			\$ -	
Roads	SQ FT			\$ -	
Playing Fields	SQ FT			\$ -	
Other (Describe in 'Remarks')				\$ -	
Other (Describe in 'Remarks')				\$ -	
Other (Describe in 'Remarks')				\$ -	
<b>Sub-Total</b>				<b>\$ -</b>	

2. Renovations, Exterior

Improvement Item	Unit	Quantity	Unit Cost	Item Cost	Remarks
Wall Structure	SQ FT			\$ -	
Floor Structure	SQ FT			\$ -	
Roof Structure	SQ FT			\$ -	
Wall Facing	SQ FT			\$ -	
Windows	EACH			\$ -	
Doors/Frames	EACH			\$ -	
Roofing	SQ FT			\$ -	
Coping/Parapet	LIN FT			\$ -	
Painting	SQ FT			\$ -	
Other (Describe in 'Remarks')				\$ -	
Other (Describe in 'Remarks')				\$ -	
Other (Describe in 'Remarks')				\$ -	
<b>Sub-Total</b>				<b>\$ -</b>	

3. Renovations, Interior

Improvement Item	Unit	Quantity	Unit Cost	Item Cost	Remarks
Floor Covering	SQ FT			\$ -	
Patch & Painting	SQ FT			\$ -	
Ceiling Finish	SQ FT			\$ -	
Plumbing	SQ FT			\$ -	
Heating/Ventilating	SQ FT	64,642	\$ 40.00	\$ 2,585,680.00	
Air Conditioning	SQ FT			\$ -	
Lighting	SQ FT	64,642	\$ 12.00	\$ 775,704.00	
Wiring	SQ FT			\$ -	
Fire Alarm	SQ FT	64,642	\$ 4.00	\$ 258,568.00	
Communication System	SQ FT			\$ -	
Technology	SQ FT			\$ -	
Interior Doors	EACH			\$ -	
Other (Describe in 'Remarks')	SQ FT	64,642	\$ 5.00	\$ 323,210.00	CONTROLS
Other (Describe in 'Remarks')				\$ -	
Other (Describe in 'Remarks')				\$ -	
<b>Sub-Total</b>				<b>\$ 3,943,162.00</b>	

4. Building Additions Including Furniture, Furnishings & Equipment

Improvement Item	Unit	Quantity	Unit Cost	Item Cost	Remarks
Administration (ES, MS, HS)	SQ FT			\$ -	
Student Services (ES, MS, HS)	SQ FT			\$ -	

Kindergarten (ES)	SQ FT			\$ -	
Primary (ES)	SQ FT			\$ -	
Media Center (ES)	SQ FT			\$ -	
Basic (MS, HS)	SQ FT			\$ -	
Reading (MS, HS)	SQ FT			\$ -	
Health Education (MS, HS)	SQ FT			\$ -	
Computer Lab (ES, MS, HS)	SQ FT			\$ -	
Inst. Mat. Center (MS, HS)	SQ FT			\$ -	
Home Economics (MS, HS)	SQ FT			\$ -	
Art (ES, MS, HS)	SQ FT			\$ -	
Ind. Technology (MS, HS)	SQ FT			\$ -	
Music (ES, MS, HS)	SQ FT			\$ -	
Physical Education (MS, HS)	SQ FT			\$ -	
Auditorium (MS, HS)	SQ FT			\$ -	
Special Education (ES, MS, HS)	SQ FT			\$ -	
Multi-Purpose (ES)	SQ FT			\$ -	
Kitchen (ES, MS, HS)	SQ FT			\$ -	
Dining (MS, HS)	SQ FT			\$ -	
Business Education (MS)	SQ FT			\$ -	
Co-Op Education (MS)	SQ FT			\$ -	
Drivers Education (MS)	SQ FT			\$ -	
Staff/Faculty (ES, MS, HS)	SQ FT			\$ -	
Toilets/Fixtures (ES, MS, HS)	SQ FT			\$ -	
Storage General (ES, MS, HS)	SQ FT			\$ -	
Storage Instructional (ES, MS, HS)	SQ FT			\$ -	
Custodial (ES, MS, HS)	SQ FT			\$ -	
Mechanical (MS, HS)	SQ FT			\$ -	
Other (Describe in 'Remarks')	SQ FT	750	\$ 307.00	\$ 230,250.00	SAFE SCHOOL ENTRANCE
Other (Describe in 'Remarks')				\$ -	
Other (Describe in 'Remarks')				\$ -	
Subtotal of Building Additions (SQ FT)		750			
Circulation	30%	225	\$ 307.00	\$ 69,075.00	
Sub-Total				\$ 299,325.00	

5. Special Construction	Unit	Quantity	Unit Cost	Item Cost	Remarks
Elevator	EACH			\$ -	
Sprinkler Systems	SQ FT	64,642	\$ 7.00	\$ 452,494.00	
Kitchen Equipment	ALL			\$ -	
Waste Treatment	EACH			\$ -	
Other (Describe in 'Remarks')				\$ -	
Other (Describe in 'Remarks')				\$ -	
Other (Describe in 'Remarks')				\$ -	
Sub-Total				\$ 452,494.00	

6. Other Special Costs	Quantity	Unit Cost	Item Cost	Remarks
			\$ -	
			\$ -	
			\$ -	
Sub-Total			\$ -	
Sub-Total of Items 1 through 6			\$ 4,694,981.00	

7. Architectural/Engineering Fees	%	Quantity	Item Cost	Remarks
New Construction			\$ -	
Renovations	7.0%	\$4,694,981.00	\$ 328,648.67	
Sub-Total			\$ 328,648.67	

8. Miscellaneous	Unit	Quantity	Unit Cost	Item Cost	Remarks
Survey	EACH			\$ -	
Soil Inv.	EACH			\$ -	
Other (Describe in 'Remarks')				\$ -	
Other (Describe in 'Remarks')				\$ -	
Other (Describe in 'Remarks')				\$ -	
Sub-Total				\$ -	

9. Contingencies	%	Quantity	Item Cost	Remarks
New Construction			\$ -	



Renovations	6.0%	\$4,694,981.00	\$ 281,698.86	
Sub-Total			\$ 281,698.86	
Grand Total Project Cost			\$ 5,305,328.53	
<div>Worksheet Links:</div> <div><a href="#">Campus Information</a></div> <div><a href="#">Building 1</a></div> <div><a href="#">Building 2</a></div> <div><a href="#">Building 3</a></div> <div><a href="#">Building 4</a></div>				
<div>Reference Data from Prior Sheets (for WVDE Use Only):</div> <div>Energy Utilization Index: 86,516</div> <div>Current Enrollment: 446</div> <div>Program Capacity: 659</div> <div>Utilization Calculation: 68%</div> <div>Building(s) in Floodplain/Floodway: 0</div>				

## **Appendix of Supporting Data**

County Procedures

### **4. Proof of Public Hearings**

Notice For :

George C. Weimer Elementary School

Alban Elementary School

Bridgeview Elementary School

## **Appendix of Supporting Data**

County Procedures

### **5. Public Hearing Documentation**

Notice For :

George C. Weimer Elementary School  
Alban Elementary School  
Bridgeview Elementary School



## **Appendix of Supporting Data**

### County Procedures

#### **6. Board Minutes**

Board minutes indicating the action of the board to approve the closure:

## **Appendix of Supporting Data**

### County Procedures

#### **7. Cover Letter**

Cover letter addressed to the State Superintendent of Schools:

## **Appendix of Supporting Data**

County Procedures

### **8. Superintendent Signature Pages**

[Completed Superintendent Signature Pages:](#)

### 3.0. County Procedures

*WVDE Application for school closure and/or consolidation*

Kanawha County

Closure of George C. Weimer Elementary School into Alban Elementary School and Bridgeview Elementary School

Scheduled Date of Hearing: Thursday, May 4, 2023 at 6:00 P.M.

Scheduled Date of County Board Vote: Thursday, May 4, 2023 following the Hearing

#### County Procedures

*This template shall be used to accumulate and present the data that is requested in Policy 6204 and W. Va. Code 18-5-13a to support the closure or consolidation of a WV public school.*

*The county shall prepare written reasons and supporting data concerning proposed school closings or consolidations to be submitted to the WVBE for approval in accordance with this policy and W. Va. Code §18-5-13a. The written materials shall:*

- ☐ *be available for public inspection in the office of the county superintendent during the 30 days preceding the date of the public hearing; and*

*Be delivered in duplicate to the:*

- ☐ *principal of a school that is proposed to be closed or consolidated, and of any school which the county designates to receive the students who are relocated as a result of the closure or consolidation; and*
- ☐ *chair of the local school improvement council (LSIC) representing a school that is proposed to be closed or consolidated, and any school that the county designates to receive the students who are relocated as a result of the closure or consolidation.*
- ☐ *A copy of the notice shall be posted at all schools, bus garages, and maintenance areas in the county in conspicuous working areas, for all professional and service personnel to observe.*

Thomas E. Williams, Jr., Ed.D.

---

Superintendent

---

Date:



### 3.2.f. Educational Program

#### County Procedures

#### Analysis and Assurance of Consideration

*Complete a projected educational program improvement analysis which includes a statement of assurance that the following have been considered:*

*Affected School Name(s)*

George C. Weimer Elementary School, Alban Elementary School, and Bridgeview Elementary Schools

*In the preparation of the documents regarding the closure and/or consolidation of the above referenced school, the following codes and policies have been considered:*

*Please check each item that was considered.*

- ☐ W. Va. 126CSR16, Policy 2419, Regulations for the Education of Students with Exceptionalities,
- ☐ W. Va. 126CSR42, Policy 2510, Assuring the Quality of Education: Regulations for Education Programs,
- ☐ W. Va. 126CSR44 et al., Policy 2520, Content Standards and Objectives for West Virginia Schools,
- ☐ WVBE Policy 6200-Planning of School Facilities
- ☐ WVBE Policy 6204-School Closings or Consolidations

---

Superintendent

---

Date:

### 3.6.a. Superintendent Verification of Board Actions

#### County Procedures

George C. Weimer Elementary School, Alban Elementary School, and Bridgeview Elementary School

Date of hearing: Thursday May 4, 2023 at 6:00 P.M.

Date of board approval: Thursday May 4, 2023 following hearing

Kanawha County requests the West Virginia Board of Education approve the following.

Closure and Consolidation of George C. Weimer Elementary School into Alban Elementary School and Bridgeview Elementary School.

- ☐ *The county assures that the applicable sections of the W. Va. Codes §18-5-13 and §18-5-13a, and WVBE Policies 6200 and 6204 have been addressed.*
- ☐ *This action is justified by the provided supplemental data and information pertinent to the following subjects: enrollment, facilities, finance, personnel, transportation, and educational programs.*
- ☐ *Documentation of all hearings, motions, written public comments, a synopsis or transcript of verbal comments, and other actions concerning the proposed school closings and consolidations were provided in this document.*
- ☐ *All hearings were properly advertised with a class III legal advertisement.*

Thomas E. Williams, Jr., Ed.D.

*Signature of county superintendent attesting to the completion of all requirements as stated in W. Va. Codes §18-5-13 and §18-5-13a and WVBE Policies 6200 and 6204.*

---

Superintendent

---

Date:

## **Appendix of Supporting Data**

County Procedures

### **9. Certified Enrollment for Kanawha County Board of Education**

Most current October 1<sup>st</sup> certified enrollment:

**KANAWHA COUNTY SCHOOLS 2022 ENROLLMENT PROJECTIONS  
BASED UPON SECOND MONTH ENROLLMENT DATA  
GRADES K-12, SPECIAL ED INCLUDED**

SCHOOL NAME	GRADE GROUP	2022-23 ACTUAL	2023-24 PROJ.	2024-25 PROJ.	2025-26 PROJ.	2026-27 PROJ.	2027-28 PROJ.	2028-29 PROJ.	2029-30 PROJ.	2030-31 PROJ.	2031-32 PROJ.	2032-33 PROJ.
<b>ELEMENTARY SCHOOLS</b>												
ALBAN	(P-5)	255	225	206	208	200	196	202	203	207	212	217
ALUM CREEK	(P-5)	159	151	137	131	129	130	131	132	134	136	138
ANDREWS HEIGHTS	(P-5)	263	246	224	219	219	215	225	227	230	234	237
ANNE BAILEY	(P-5)	217	225	229	232	224	226	232	233	236	239	242
BELLE	(P-5)	291	280	274	271	260	250	255	256	259	263	267
BRIDGEVIEW	(P-5)	422	395	375	356	349	347	359	362	368	376	382
CEDAR GROVE	(P-5)	168	143	121	115	110	110	112	113	115	117	119
CENTRAL	(P-5)	333	353	362	353	348	346	353	353	357	362	366
CHAMBERLAIN	(P-5)	213	218	218	204	200	199	200	199	201	203	205
CHESAPEAKE	(P-5)	115	114	112	115	117	107	106	106	107	108	109
CLENDENIN	(P-5)	300	293	269	257	248	236	243	243	245	249	251
CROSS LANES	(P-5)	310	299	290	283	276	282	294	298	304	310	315
DUNBAR PRIMARY	(P-5)	535	539	539	522	504	492	502	504	511	521	528
EDGEWOOD	(P-5)	378	381	382	372	373	367	378	379	384	391	396
ELK CENTER	(P-5)	491	441	422	408	401	394	409	411	417	424	430
FLINN	(P-4)	439	375	369	356	333	328	338	346	355	363	363
GRANDVIEW	(P-5)	174	165	162	154	150	147	151	152	154	157	159
HOLZ	(P-5)	279	263	257	262	244	241	243	242	245	250	253
KANAWHA CITY	(P-5)	245	232	227	212	211	203	211	212	215	219	222
KENNA	(P-5)	166	158	159	156	153	153	156	156	157	159	160
LAKEWOOD	(P-5)	288	289	284	279	275	273	282	284	288	293	297
MALDEN	(P-5)	152	114	106	102	99	96	103	104	107	110	113
MARMET	(P-5)	112	104	99	95	94	91	94	94	95	97	99

Tuesday, November 22, 2022

Page 1 of 4



**KANAWHA COUNTY SCHOOLS 2022 ENROLLMENT PROJECTIONS  
BASED UPON SECOND MONTH ENROLLMENT DATA  
GRADES K-12, SPECIAL ED INCLUDED**

SCHOOL NAME	GRADE GROUP	2022-23 ACTUAL	2023-24 PROJ.	2024-25 PROJ.	2025-26 PROJ.	2026-27 PROJ.	2027-28 PROJ.	2028-29 PROJ.	2029-30 PROJ.	2030-31 PROJ.	2031-32 PROJ.	2032-33 PROJ.
MARY INGLES	(P-5)	135	141	138	132	127	130	136	136	138	140	142
MIDLAND TRAIL	(P-5)	155	144	133	123	119	120	121	122	123	126	127
MONTROSE	(P-5)	236	213	199	193	182	181	185	186	188	191	193
NITRO ELEM.	(P-5)	367	333	326	317	306	298	304	304	306	310	313
OVERBROOK	(P-5)	349	382	376	374	348	348	347	345	346	348	349
PIEDMONT	(P-5)	259	301	308	298	288	292	299	299	301	305	308
PINCH	(P-5)	321	340	337	329	326	313	320	322	326	333	338
PRATT	(P-5)	161	137	134	128	121	119	122	123	125	128	129
PT. HARMONY	(P-5)	487	452	431	406	392	389	399	402	408	417	424
RICHMOND	(P-5)	223	236	237	225	229	227	236	239	243	248	252
RUFFNER	(P-5)	290	263	254	246	237	234	239	240	243	247	250
RUTHLAWN	(P-5)	226	246	237	240	236	229	234	234	237	241	244
SHARON DAWES	(P-5)	144	143	149	147	143	141	139	138	138	139	139
SHOALS	(P-5)	210	192	172	168	163	160	166	167	170	174	177
SISSONVILLE ELEM.	(P-4)	243	277	266	256	243	245	253	255	258	260	260
WEBERWOOD	(P-5)	261	245	247	239	231	235	241	243	248	254	259
WEIMER	(P-5)	138	133	126	121	117	118	121	122	124	127	129
WEST SIDE	(P-5)	353	314	298	292	283	279	288	291	296	301	306
<b>ELEMENTARY SCHOOLS</b>		<b>10,863</b>	<b>10,495</b>	<b>10,191</b>	<b>9,896</b>	<b>9,608</b>	<b>9,487</b>	<b>9,729</b>	<b>9,777</b>	<b>9,909</b>	<b>10,082</b>	<b>10,207</b>

**KANAWHA COUNTY SCHOOLS 2022 ENROLLMENT PROJECTIONS  
BASED UPON SECOND MONTH ENROLLMENT DATA  
GRADES K-12, SPECIAL ED INCLUDED**

SCHOOL NAME	GRADE GROUP	2022-23 ACTUAL	2023-24 PROJ.	2024-25 PROJ.	2025-26 PROJ.	2026-27 PROJ.	2027-28 PROJ.	2028-29 PROJ.	2029-30 PROJ.	2030-31 PROJ.	2031-32 PROJ.	2032-33 PROJ.
<b>HIGH SCHOOLS</b>												
CAPITAL HIGH	(9-12)	1,089	1,066	1,061	964	955	922	898	889	862	847	829
GEORGE WASHINGTON	(9-12)	1,198	1,193	1,159	1,059	1,035	1,047	1,022	1,057	1,053	1,029	1,055
HERBERT HOOVER HI	(9-12)	789	757	787	781	746	756	689	633	646	616	611
NITRO HIGH	(9-12)	827	802	775	716	674	651	631	632	601	576	556
RIVERSIDE HIGH	(9-12)	1,220	1,137	1,013	912	867	824	802	758	722	696	681
SISSONVILLE HIGH	(9-12)	563	576	545	541	521	495	492	473	481	469	455
SO. CHARLESTON HI	(9-12)	954	930	908	881	837	810	786	758	738	724	702
ST. ALBANS HIGH	(9-12)	993	992	1,040	1,008	970	950	869	844	823	796	808
<b>HIGH SCHOOLS</b>		<b>7,633</b>	<b>7,453</b>	<b>7,288</b>	<b>6,862</b>	<b>6,605</b>	<b>6,455</b>	<b>6,189</b>	<b>6,044</b>	<b>5,926</b>	<b>5,753</b>	<b>5,697</b>

**KANAWHA COUNTY SCHOOLS 2022 ENROLLMENT PROJECTIONS  
BASED UPON SECOND MONTH ENROLLMENT DATA  
GRADES K-12, SPECIAL ED INCLUDED**

SCHOOL NAME	GRADE GROUP	2022-23 ACTUAL	2023-24 PROJ.	2024-25 PROJ.	2025-26 PROJ.	2026-27 PROJ.	2027-28 PROJ.	2028-29 PROJ.	2029-30 PROJ.	2030-31 PROJ.	2031-32 PROJ.	2032-33 PROJ.
<b>MIDDLE SCHOOLS</b>												
ANDREW JACKSON	(6-8)	515	493	487	497	476	449	432	417	404	387	379
DUNBAR MIDDLE	(6-8)	300	296	288	296	290	297	290	285	266	256	251
DUPONT MIDDLE	(6-8)	423	404	422	386	364	335	327	311	298	286	280
EAST BANK MIDDLE	(6-8)	254	265	261	254	223	231	225	225	209	201	197
ELKVIEW MIDDLE	(6-8)	613	618	582	529	494	491	495	502	463	443	436
HAYES MIDDLE	(6-8)	436	435	431	408	384	379	393	392	378	363	356
HORACE MANN MID	(6-8)	399	387	356	382	366	375	363	367	352	336	326
JOHN ADAMS MIDL	(6-8)	705	689	725	698	723	696	728	699	683	656	641
MCKINLEY MIDDLE	(6-8)	303	279	261	235	231	218	228	226	218	208	204
SISSONVILLE MIDDLE	(5-8)	541	513	511	490	495	484	469	454	426	416	420
SOUTH CHARLESTON	(6-8)	352	351	338	327	302	285	276	278	273	262	256
WEST SIDE MID	(6-8)	377	364	366	360	330	318	317	314	299	286	280
<b>MIDDLE SCHOOLS</b>												
		5,218	5,094	5,028	4,862	4,678	4,558	4,543	4,470	4,269	4,100	4,026
<b>Grand Total</b>	<b>KANAWHA COUNTY</b>	23,714	23,042	22,507	21,620	20,891	20,500	20,461	20,291	20,104	19,935	19,930

<b>School Closing and Consolidation Timeline</b>			
<b>30 Days Before Public Hearing</b>	<b>3 Weeks Before Public Hearing</b>	<b>Public Hearing For a Closing or Consolidation</b>	<b>Public Hearing Completion and Other Approval Deadlines</b>
<b>Public Postings</b>	<b>Legal Advertisement</b>		
<p>3.1. Supporting Data The county board must prepare and reduce to writing, reasons and supporting data concerning proposed school closings or consolidations to be submitted to the WVBE for approval in accordance with policy 6204 and WV Code.</p> <p>3.1.a. Public Postings Be available for public inspection in the office of the county superintendent during the thirty days preceding the date of the public hearing.</p> <p>3.1.b. Principal Notification Be delivered to the principal and LSIC chair of both closing and receiving schools.</p> <p>3.3.a. Employee Postings Notice for public hearing shall be posted in all schools, bus garages, and maintenance areas.</p>	<p>3.3. Legal Notice The county board must provide notice for the public hearing which shall be advertised through a class III legal advertisement for three weeks prior to the date of the hearing in a qualified newspaper (as defined by the WV Secretary of State) in general circulation in the locality of any school to be closed or consolidated and in the locality of any school that has been designated by the county board to receive students from the schools to be closed or consolidated.</p>	<p>3.4.a. Public Hearing</p> <ol style="list-style-type: none"> <li>1. Should be scheduled for a reasonable time, not to begin before 9:00am nor continue beyond 11:00pm.</li> <li>2. At least a quorum of the county board members and the county superintendent from the county shall attend and be present at the public hearing(s).</li> <li>3. A separate hearing shall be held for each school closed or consolidated and the schools designated to receive students shall also hold hearing(s).</li> <li>4. More than one hearing may be held during a given day.</li> </ol> <p>3.4.d. County Board Vote on Proposed Action After all provisions and hearings have been completed, county boards of education must take a formal vote on the closure(s).</p>	<p>3.4. Deadlines County boards of education must complete the hearing requirements on or before December 31st of the calendar year prior to the calendar year in which the closures or consolidations are to be effective. Locally funded projects related to a closure or consolidation must complete the process prior to initiation of construction.</p> <p>SBA Needs applications Before a project will be considered by the School Building Authority of WV, a school that is planned for closure, as part of their Needs Submission, shall have had its stated closure approved by the WVBE.</p> <p>5.0. Technical Assistance When planning a school closure, counties should seek technical assistance from the WVDE before their public hearing.</p>

This timeline (revised 3/16/22) is provided by the WVDE as a technical assistance tool for county boards to use in the preparation of planning their actions for a proposed school closure or consolidation. This timeline does not reduce or eliminate the requirements found in WV State Code or WVBE Policy 6204 as they relate to school closures or consolidations. This document does not replace or supplant legal assistance provided by counsel engaged to represent the county.